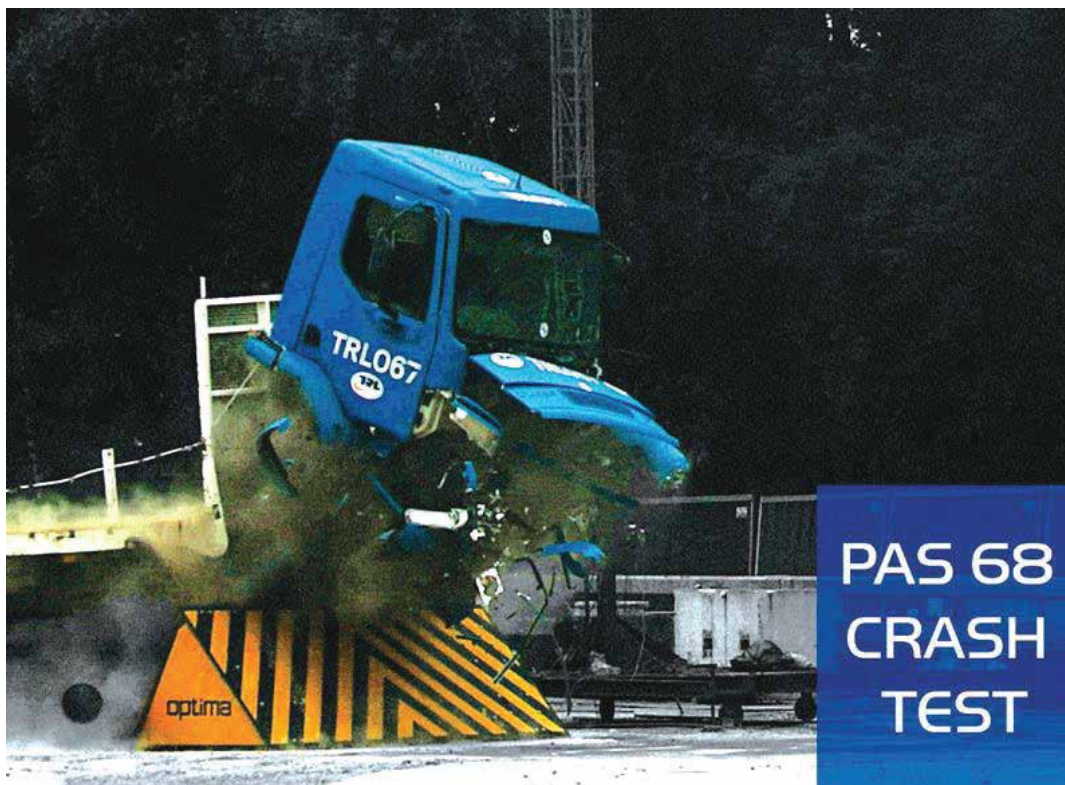




SECURITY SYSTEMS | HRR-HS-4100 CRASH TESTED HYDRAULIC ROAD BLOCKERS

GENERAL VIEW OF HRR-HS-4100



GENERAL DESCRIPTION

Optima HRR-HS-4100 crash tested hydraulic road blockers are designed especially for entrance points which have a threat of vehicle attack or for the ones that have high-security requirements. The drive unit is electro-hydraulic, but in case of power failure, road blocker can be lowered or lifted manually with the help of hand pump. Typical raise/lower time is 3-5 seconds, in case of emergency, raise/lower time can be as low as 1.5 seconds if hydraulic accumulator added to system(optional).

Optima HRR-HS-4100 crash tested hydraulic road blockers are crash tested to PAS68:V/7500[N3]/80/90:8.6/13.5 standards.





STEEL STRUCTURE

The road blocker withstands a minimum of 50 tons of load per axle. Cushioned cylinders power the road blocker up as they pivot on multi-sealed bearings. The steel structure is sandblasted or can be hot-dip galvanized (optional). The standard color is RAL1028 traffic yellow / RAL9005 black.

HYDRAULIC POWER UNIT AND CONTROL ELECTRONICS

Normal operating pressure is around 80-120 bars. Coolers or heaters are can be integrated to the hydraulic power unit as an option. Control electronics utilized in hydraulic road blocker is Optima PLC Controller. Two keyboards with emergency stop are standard; one desktop, other being integrated into the hydraulic power unit.

ENVIRONMENTAL CONDITIONS AND POWER REQUIREMENT

Between -15°C and + 65°C, 95% non-condensing humidity; 380V,3 phases, 50-60 Hz (or 220V/440V/etc., three phase, 50-60 Hz, optional by transformer).

INCLUDED ACCESSORIES

- ⇒ Red/green traffic lights with steel pole.
- ⇒ Dual vehicle safety loop detector.

OPTIONAL ACCESSORIES

- ⇒ Flashing lights in front of the road blocker.
- ⇒ Protective construction(tubular) around drive unit.
- ⇒ Hydraulic accumulator.
- ⇒ Transformer to convert the power.
- ⇒ Uninterrupted power supply (UPS).
- ⇒ DC motor and pump with dry batteries.
- ⇒ It is possible to operate the system by using solar panel with DC motor.
- ⇒ Coolers or heaters.
- ⇒ Submersible drainage pump.
- ⇒ Wrong way alarm.
- ⇒ High speed alarm.
- ⇒ Different colors.
- ⇒ Hot dip galvanizing.
- ⇒ SCADA or any control system: It is possible to change and check the position of road blocker with touch screen control panel, mobile devices (ios-android), computer, etc.



MODELS

- ⇒ Raised height: 1000mm.
- ⇒ Width: 1500mm-6000mm.

MAIN BODY MEASUREMENTS AND FOUNDATION

