



SUITE[®], THE HOMELIFT



WHY CHOOSE NOVA SUITE

- ➔ **DESIGN**
Style, elegance, refined materials and shapes merge into a contemporary aesthetic, where every detail is designed to enhance the environment with coherence, harmony and functionality.
- ➔ **BESPOKE PROJECTS**
Maximum flexibility to meet every need: from private homes to public spaces, tailored solutions for both new constructions and renovations.
- ➔ **QUALITY**
Every stage of the production process is crafted with attention to detail to ensure a product of superior quality.
- ➔ **ENERGY EFFICIENCY**
Suite stands out for its low energy consumption, especially in the electric version.
- ➔ **SAFETY AND COMFORT**
State-of-the-art technologies for a smooth, quiet, and safe ride.





WHY SHOULD YOU CHOOSE SUITE HOMELIFT?

Suite homelift is specifically designed to enhance mobility within buildings and adapt seamlessly to any environment, blending elegantly into every kind of home setting.

Private homes, prestigious villas, small apartment blocks or public spaces: Suite enhances every space, making it more accessible and comfortable.

It can be installed either in a masonry shaft or a metal structure, for both indoor and outdoor environments. The versatility of Suite range offers wide freedom, while its dimensional flexibility ensures optimal use of the available space in any scenario.

Suite overcomes architectural barriers without compromising the aesthetics of the surroundings, thanks to cars crafted with premium finishes and a wide range of accessories for maximum functionality.

Italian design excellence and the prestige of Made in Italy come together with a strong focus on energy efficiency and sustainability, resulting in a homelift that improves users' quality of life, respects the environment and adds value to the property.





PRIVATE OR PUBLIC SPACES

Suite homelift is designed to ensure complete autonomy in movements within any type of residential building, integrating seamlessly into every environment thanks to the wide range of available finishes and compact dimensions that optimize space.

The same versatility also makes it ideal for public spaces: shops, shopping centers, banks, offices, schools, hotels, and restaurants. In every setting, Suite effectively overcomes architectural barriers.



HOMES, VILLAS AND APARTMENT BLOCKS

Suite ensures safe and reliable movement: designed to last over time, it provides full accessibility to all floors while offering maximum protection for every user.

Perfect for private homes, villas, and apartment blocks, it is an essential aid for people with reduced mobility, allowing complete autonomy of movement without risk. Moreover, the presence of a safe home lift increases the property's value and enhances living comfort.





INDOOR AND OUTDOOR HOMELIFTS

Suite homelift integrates elegantly into any environment, enhancing both indoor and outdoor spaces.

Inside the house, it can be installed in a masonry shaft or in a custom metal shaft, available in a wide variety of finishes.

Installation outdoors is equally straightforward: the metal structure allows the use of building openings, such as a balcony or a window, for practical and functional access.



MASONRY SHAFT AND METAL STRUCTURE

Suite can be installed in a masonry shaft or a metal structure that also enhances the project aesthetically.

NOVA metal structures stand out for their strength, stability and refined design, adapting seamlessly to the building's style and available space.

Thanks to their design flexibility, they can even be fitted into narrow stairwells, starting from 70 cm in width.





SWING DOORS AND AUTOMATIC DOORS

Suite homelift can be equipped with swing doors (blind or glazed) or automatic sliding doors, adapting to every type of requirement.

All doors are available in a wide variety of finishes and customization options, allowing perfect harmony with the surrounding environment.



GEARLESS AND HYDRAULIC HOMELIFTS

Suite homelift is available in two different versions: hydraulic and electric.

The electric version, with its gearless motor, combines high-level performance with low energy consumption comparable to that of a standard household appliance.

The hydraulic solution, on the other hand, offers maximum design flexibility, ideal for custom installations both indoors and outdoors.





ELIMINATION OF ARCHITECTURAL BARRIERS

Installing a Suite homelift means investing in a more accessible and inclusive building, removing architectural barriers.

The homelift can be equipped with functional accessories (such as handrails), as well as spacious cars designed to accommodate a wheelchair user and companion.

The interior layout is optimized to provide maximum space and comfort.



PANORAMIC HOMELIFTS

Suite homelift is also available in a panoramic version, featuring a metal structure with glass panels, allowing users to enjoy the view while visually expanding the space.

When installed outdoors, it integrates discreetly into the building façade, offering a privileged view. Indoors, it brightens and enhances the environment, increasing comfort and reducing any potential sense of claustrophobia during use.



Compact SUITE

Compact Suite homelift is the result of advanced technical design, specifically developed for modernizations and renovations in existing buildings and limited spaces.

Thanks to its reduced headroom and pit, it does not require complex structural work and is fully customizable in terms of finishes and accessories.

Its compact dimensions make it perfect for installation in narrow stairwells within small apartment blocks or private homes.

These features allow Compact Suite to integrate discreetly and elegantly into any domestic space, bringing brightness to the environment thanks to its metal structure with panoramic glass panels.





Compact Suite finishes

- COP applied on rear wall, available in skinplate, RAL painted metal or stainless steel.
- Fully panoramic side walls with various glass options.
- Car ceiling available in skinplate, RAL painted metal or stainless steel.
- Car lighting with LED spots.
- Swing doors at landings, including the possibility to combine them with car folding doors to guarantee automatic operation.

STARTING FROM 70 CM WIDTH!

We design and build the homelift you need, adapting it according to your space requirements.

- Maximum travel: 18 m.
- Minimum shaft size: 700x900 mm.
- Minimum car size: 500x550 mm.
- Maximum car size and duty load: 650x1200 mm / 300 kg.
- 90° entrances available upon request.

Grand SUITE

Grand Suite platform lift is the ideal choice for those seeking an elegant and functional mobility solution for large spaces.

With refined finishes and a duty load up to 1,200 kg, it combines style and strength in a reliable and versatile platform lift.

Perfect even in prestigious residential settings, it represents the balance between aesthetics, capacity, and comfort.

Grand Suite is ideal for making public, residential, or professional buildings accessible, helping to remove any architectural barriers.

Finally, in healthcare environments, such as medical centers or pharmacies, it can serve as a stretcher lift, providing a system suitable for heavy loads, stable and safe in every situation.





Grand Suite finishes

- COP and car walls available in skinplate (max. car height 210 mm), RAL painted metal or stainless steel.
- Car ceiling available in skinplate, RAL painted metal or stainless steel.
- Car lighting with LED spots.
- Available with swing doors or automatic sliding doors.

DUTY LOAD UP TO 1200 KG, 16 PEOPLE INSIDE THE CAR

We design and build the platform lift you need, adapting it according to your space requirements.

Grand Suite can be installed either inside or outside buildings.

- Maximum travel: 18 m.
- Minimum car size and duty load: 1400x1500 mm / 750 kg.
- Maximum car size and duty load: 1400x2500 mm / 1200 kg.
- Through-car or 90° entrances available upon request.





NEW SERIES TOUCH

The **new Suite Touch series** seamlessly combines **design** and **innovation**, integrating elements that **revolutionize NOVA vertical mobility experience**.

INTERACTIVE CONSOLE & TOUCH SCREEN DISPLAY

The interactive console is the beating heart of the Touch series: its intuitive interface allows floor selection and customization of RGBW car lighting, while also serving as a control center to check the homelift's operational status and monitor related parameters.

DESIGN HANDRAIL

In the Touch series, the handrail is a defining detail that echoes the clean lines of the console and ceiling.

In the version with hold-to-run operation, it is placed horizontally, integrating a sensing system to activate platform movement. With automatic operation, it is positioned vertically next to the console, contributing to the aesthetic balance of the entire car.

LIGHTING

Suite Touch places light at the center of the experience, making it an essential element that interacts with the platform's movement. The RGBW lighting, customizable in various colors, accompanies the car's arrival at each floor with a uniquely scenic touch.

TOUCH-TO-CALL BUTTON ON FLOORS

At each floor, the backlit touch button activates the platform with a simple hand gesture, offering an intuitive experience that combines design and functionality.

TOUCH SERIES WITH AUTOMATIC OPERATION

In **Suite Touch** installations with **automatic operation**, the central **console** features a multifunction **touch screen display**, a **vertical handrail** designed for an elegant and secure grip, multicolor perimeter **LED lights**, and a ceiling with exclusive **Square** lighting.

Through the console's touch screen display, users can **select floors**, manage **aesthetic options** (lighting colours, backgrounds, floor icons), and check the **operating status** of the system.



- Painted sheet metal walls RAL 9005
- Console and handrails in painted sheet metal RAL 9007
- PVC floor 13022 Beton Concrete
- Painted sheet metal ceiling RAL 9005
- Square lighting
- Panoramic wall



- Painted sheet metal walls RAL 9010
- COP panel in L4SMA skinplate
- Console and handrails in painted sheet metal RAL 9010
- PVC floor 13332 White Marble
- Painted sheet metal ceiling RAL 9010
- Square lighting
- Panoramic wall



- Painted sheet metal walls RAL 9007
- Console and handrails in painted sheet metal RAL 9005
- PVC floor 42292 Charcoal Slate
- Painted sheet metal ceiling RAL 9007
- Square lighting
- Panoramic wall

TOUCH SERIES WITH HOLD-TO-RUN OPERATION

In **Suite Touch** installations with **hold-to-run operation**, the **central console** features a multifunction touch screen display, a **smart horizontal handrail** with integrated **sensing system** (to activate the movement of the platform by keeping the hand in contact), multicolour perimeter **LED lights**, and a ceiling with exclusive **Square** lighting.

Through the console's touch screen display, users can **select floors**, manage **aesthetic options** (lighting colours, backgrounds, floor icons), and check the **operating status** of the system.



- Walls in sheet metal painted RAL 9005
- Console and handrails in sheet metal painted RAL 9007
- Floor in PVC 13022 Beton Concrete
- Painted sheet metal ceiling RAL 9007
- Square lighting
- Panoramic wall



- Walls in sheet metal painted RAL 9005
- COP panel in skinplate A90GTA
- Console and handrails in sheet metal painted RAL 9010
- Floor in PVC 13332 White Marble
- Painted sheet metal ceiling RAL 9010
- Square lighting
- Panoramic wall

- Walls in sheet metal painted RAL 9005
- COP panel in sheet metal painted RAL 9007
- Console and handrails in sheet metal painted RAL 9005
- Floor in PVC 13022 Beton Concrete
- Painted sheet metal ceiling RAL 9007
- Square lighting
- Panoramic wall

CONSOLE FOR HOLD-TO-RUN OPERATION



TOUCH SCREEN

Console with RGBW lighting, touch display for floor selection, and smart horizontal handrail.



TOUCH SCREEN + BUTTONS (OPT.)

Console with RGBW lighting, touch display + braille buttons for floor selection, and smart horizontal handrail.

CONSOLE FOR AUTOMATIC OPERATION



TOUCH SCREEN

Console with RGBW lighting, touch display for floor selection, and vertical handrail.



TOUCH SCREEN + BUTTONS (OPT.)

Console with RGBW lighting, touch display + braille buttons for floor selection, and vertical handrail.

LED CAR LIGHTING



Square LED lighting: central white light with multicolour RGBW side lights featuring an exclusive design, in harmony with the aesthetics of the landing button and the handrails. Standard for the Touch series.

LANDING BUTTON



LED landing button, backlit with touch activation.

HANDRAIL (OPT.)



Additional horizontal Square handrail, installable on walls without a console. Finish and colour match the handrail on the COP wall.

MIRRORS (OPT.)



HALF-WALL

Car width x 1050 mm



FULL-WALL

Car width x car height

CLASSIC SERIES WITH SKINPLATE WALLS

The **Suite Classic** series offers, even in the **base configuration**, a wide range of **finishes**, with a choice of 10 wall variants in **Skinplate**, 5 **PVC** floor colours, and lighting with 2 **LED spotlights**.

Cars in the **Classic series** can be enhanced with numerous components to improve **aesthetics**, **comfort**, and **functionality**: elements such as **panoramic walls**, **LCD displays**, **mirrors**, **handrails**, and **fans** allow the homelift to be tailored to every need.



- Walls in Skinplate A4 with matte white milk texture
- White ceiling
- Floor in PVC 13082 Gravel Concrete
- Lighting with 2 LED spotlights



- Walls in Skinplate PPS10 with white marbled effect
- White ceiling
- Floor in PVC 42292 Charcoal Slate
- LED Panel lighting (optional)



- Walls in Skinplate F12PPS with brushed stainless steel effect
- White ceiling
- Floor in PVC 13332 White Marble
- Lighting with 2 LED spotlights
- Classic mirror 840x1050 mm (optional)
- Stainless steel handrail with curved ends (optional)
- Car LCD display (optional)

CLASSIC SERIES WITH SPECIAL CAR WALLS

Special configurations of the **Classic series** offer extensive **customization options**, including **plastic laminate**, **stainless steel**, and **RAL-painted walls**, as well as a variety of **ceilings** and **lighting** options.

Cars in the **Classic series** can be enhanced with numerous components to improve **aesthetics**, **comfort**, and **functionality**: elements such as **panoramic walls**, **LCD displays**, **mirrors**, **handrails**, and **fans** allow the homelift to be tailored to every need.



- Walls in plastic laminate with horizontal slats 381 Douglas Vanilla Microline
- White ceiling
- Floor in PVC 13082 Gravel Concrete
- Lighting with 4 LED spotlights
- Polished stainless steel control panel
- Car LCD display



- Rear and side walls in plastic laminate with horizontal slats 609 Amazzonia Sucupira Holz
- Wall with control panel and ceiling in Skinplate F12PPS
- Floor in PVC 13002 Silver Concrete
- LED Quadro lighting
- Stainless steel handrail with curved ends, length 480 mm
- Car LCD display

- Walls in plastic laminate with horizontal slats 388 Douglas Ice Microline
- White ceiling
- Floor in PVC 42292 Charcoal Slate
- LED Panel lighting
- Brushed stainless steel control panel
- Car LCD display

COP

FULL HEIGHT COP
WIDTH 500 MM

FLAT MOUNTED BUTTONS
Standard

Flat mounted buttons are inserted directly into the COP panel, without the use of additional brackets and plates, to achieve an essential and elegant appearance.

The red mushroom-shaped Stop pushbutton is standard only for homelifts without car doors (EU), while it is absent for installations with car doors and automatic operation.



BUTTONS



ROUND BUTTONS IN CAR AND AT LANDINGS

Round-shaped button with steel collar and twin light system: circle and symbol with permanent white light, blue light upon activation. Available in two colours: silver stainless steel (standard) and black stainless steel (optional).

Inner diameter 30 mm; collar ring diameter 37.2 mm.

All buttons are supplied with embossed number or symbol (as required by 81-70 standard) and braille alphabet (as provided by DM 236/89).



ACCESSORIES (OPT.)

MIRROR



CLASSIC MIRROR

840x1050 mm

RESTRICTED ACCESS



ENABLING KEY INSIDE THE CAR

Car buttons activated exclusively by turning the key.



PIN CODE INSIDE THE CAR

Car buttons activated exclusively by entering the PIN code.

HANDRAILS



Stainless steel handrail with curved ends on COP, length: 480 mm



Stainless steel handrail with straight ends



Stainless steel handrail with curved ends

DISPLAY



LCD DISPLAY
INSIDE THE CAR



LCD DISPLAY
AT LANDINGS



LED CAR LIGHTING



2 SPOTS - Standard



4 SPOTS



PANEL



QUADRO - Minimum car size 1000x1000 mm



LINE



SOFT - Suspended ceiling
Required car height = 2100 mm due to suspended ceiling.

SWING DOORS FOR THE ENTIRE SUITE RANGE



ND1

Blind door in RAL-painted sheet metal with recessed handle.

Available with LED lighting inside the recessed handle (opt.)

Available in thermal-cut version with external handle (opt.)

Available in fire-rated version with external handle (opt.)



ND4

Panoramic door in RAL-painted sheet metal with integrated handle.

Available with LED lighting behind the integrated handle (opt.)

! The images displayed in this catalogue are for illustrative purposes only and do not bind the Company.
The colours of the finishes may differ as compared to those in the printed images. The materials displayed in this catalogue are subject to change.



ND2

Door in RAL-painted sheet metal with vertical panoramic window and recessed handle (minimum door width 650 mm).

Available with LED lighting inside the recessed handle (opt.)



ND3

Glazed door in RAL-painted sheet metal with integrated handle.

Equipped with external key lock and internal knob.

Available with LED lighting behind the integrated handle (opt.)

Available in thermal-cut version with external handle (opt.)



ND-ALU

Panoramic door in natural anodized aluminium with full-height flush handle in RAL 7024 or with external handle (opt.).



HANDLE LIGHTING (OPT.)

LED handle lighting activates when the car reaches the landing. Available for recessed or integrated handles.

! The landing button shown in the images refers to the Touch series.
Fire-rated version available for both swing and automatic doors, exclusively in blind version.

GLASS COLORS FOR SWING DOORS



CLEAR



SMOKED GREY

Also available
in stopsol version



MILK WHITE



SMOKED BRONZE

Also available
in stopsol version



MIRROR

Single sided
or double sided

HANDLES FOR SWING DOORS



RECESSED

Standard on ND1 and
ND2.
Version with lighting
available as optional.



INTEGRATED

Standard on ND3 and
ND4.
Version with lighting
available as optional.



FLUSH

Standard on ND-ALU.



NH1

Available as optional.
Heights: 400 and 750
mm.



NH2

Available as optional.
Height: 265 mm.

! The images displayed in this catalogue are for illustrative purposes only and do not bind the Company.
The colours of the finishes may differ as compared to those in the printed images. The materials displayed in this catalogue are subject to change.



SLIDING DOORS

Blind panels, car or landing doors.
Side or central opening.



SLIDING DOORS

Glazed panels, car or landing doors.
Side or central opening.



FOLDING DOORS

Blind panels, car doors.
Central opening.

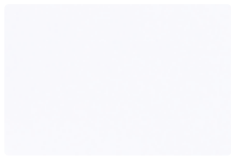


FOLDING DOORS

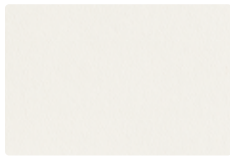
Glazed panels, car doors.
Central opening.

FINISHES FOR THE ENTIRE SUITE RANGE

SKINPLATE Standard finish for car walls - Optional finish on automatic sliding doors



A1
Optical white



A4
Milk white



PPS10
Marble



A90GTA
Canvas



N1
Light grey



DT63
Fabric beige



DT65
Fabric grey



L4SMA
Bronze



F12PPS
St. steel look



N3PP
Glossy black

PLASTIC LAMINATE Car walls - With horizontal or vertical panels



388 Douglas Ice
Microline finish



381 Douglas Vanilla
Microline finish



1612 Teak Sumatra
Root finish



609 Amazonia
Sucupira - Holz fin.



1459 Statuario
Papier finish



549 Caucaso
Papier finish



874 Brushed gold

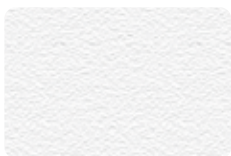


881 Polished gold

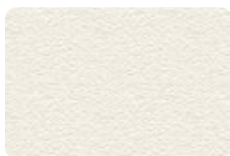


726 Polished
gunmetal

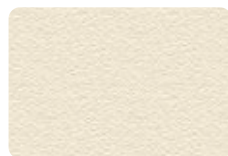
PAINTING Texturized finish - For car walls, doors and metal structure



RAL 9003
Signal white



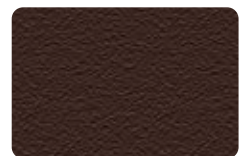
RAL 9010
Pure white



RAL 1013
Pearl white



RAL 1019
Grey beige



RAL 8017
Chocolate brown



RAL 9006
White aluminium



RAL 9007
Grey aluminium



NW300M
Micaceous iron



RAL 7016
Anthracite grey



RAL 9005
Jet black

OPTIONAL PAINTING For car walls, doors and metal structure

All K7 RAL colours available upon request.

FINISHES FOR THE ENTIRE SUITE RANGE

STAINLESS STEEL For car walls and automatic sliding doors



Polished stainless steel



Brushed stainless steel



Linen stainless steel



Champagne polished st. steel



Gold polished stainless steel

PANORAMIC WALLS



Full width, mid-height window



Full width, full height window



2 full width, full height windows



! The images displayed in this catalogue are for illustrative purposes only and do not bind the Company.
The colours of the finishes may differ as compared to those in the printed images. The materials displayed in this catalogue are subject to change.

FLOORS FOR THE ENTIRE SUITE RANGE

PVC - Standard



13332
White Marble



13002
Silver Concrete



13022
Beton Concrete



13082
Gravel Concrete



42292
Charcoal Slate

STUDDED RUBBER



G3 Bolli
Black



G1 Bolli
Grey



CABINETS FOR THE ENTIRE SUITE RANGE



HYDRAULIC SYSTEM

Small: 600x360x1400 mm
Medium: 750x410x1400 mm
Large: 850x510x1500 mm

Finishes: RAL-Painted (with metal shaft) – Skinplate A1



GEARLESS SYSTEM

Dimensions: 250x120x2100 mm

Finishes: RAL-Painted (with metal shaft) – Skinplate A1

ACCESSORIES FOR THE ENTIRE SUITE RANGE

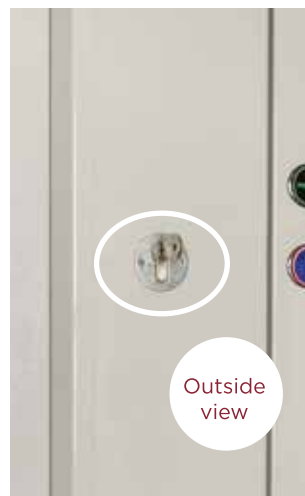


RESERVED ACCESS



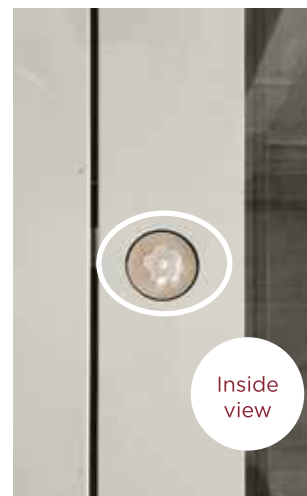
MECHANICAL KEY AT LANDINGS

Call activated exclusively with the mechanical key.



ANTI-INTRUSION KEY FOR SWING DOORS

Security key to limit external access. Available only for ND1 and ND3 doors.



UNLOCKING SYSTEM FOR SWING DOORS

Knob to unlock the swing door from inside the car. Available only for ND1 and ND3 doors.

RESERVED OPERATION



GUEST ACCESS

Reserved operation provides a system to allow third-party use of the homelift to reach only the desired floor. Available in combination with mechanical key.

DOOR OPENER



AUTOMATIC SWING DOOR OPENING SYSTEM

! The images displayed in this catalogue are for illustrative purposes only and do not bind the Company. The colours of the finishes may differ as compared to those in the printed images. The materials displayed in this catalogue are subject to change.

COMFORT



TANGENTIAL FAN

Length 300mm - Airflow 360 m³/h

SAFETY



CAR TELEPHONE

Device directly connected to the landline for calls from the cabin to outside the building.

Alarm system for landline or GSM, to be ordered separately.



EMERGENCY CALL SYSTEM



- TELEPHONE DIALER FOR LANDLINE
- TELEPHONE DIALER WITH GSM MODULE



Smart" emergency call systems that allow the alarm call to be sent directly to a rescue center.



[.]

THE **NOVATION** BEGINS



For over thirty years, the **Govoni family** and **NOVA Elevators** have been turning vertical movement into a unique experience, with homelifts that embody the excellence of Italian design and craftsmanship.

Today, **more than 1,000 projects take shape every year** around the world, bringing comfort, beauty and accessibility to the spaces we live in.

Passion, innovation and **responsibility** guide our path, creating homelifts that are not just **mobility solutions**, but distinctive signs of **style** and **design**.



NOVA S.r.l.
Via G. Galilei, 116/c

Loc 1: Antelias, Seaside, SSS Bldg, beside AISHTI.
Loc 2: Bchamoun, Behind Louise Wegmann, SSS Bldg.
Tel: +961 71 260 007
Email: sales@sss-lb.com
www.sss-lb.com

Next Level Living



Member of



FOLLOW US!



These technical specifications and images are intended for illustrative purposes and are not binding for the company.
NOVA S.r.l. reserves the right to make any changes at any time it considers appropriate.
All rights reserved. Even partial reproduction of this catalog is forbidden without the consent of NOVA S.r.l.