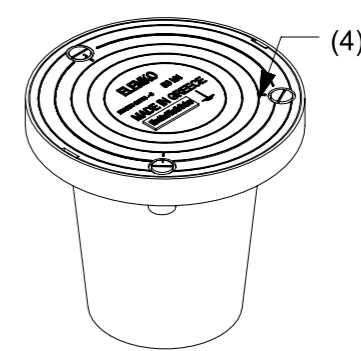
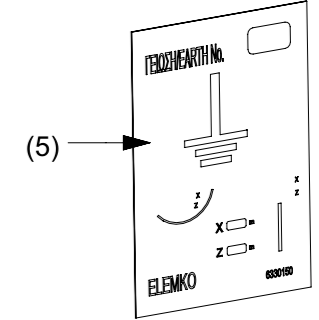


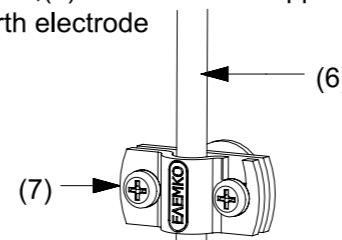
Detail A
 (1): Clamp (Cu-A) for connecting 5/8" earth rod with round conductor ELEMKO code 63 30 115 tested according IEC EN 62561 - 1, type H, 100kA, (2) with stranded copper conductor (3) and earth electrode



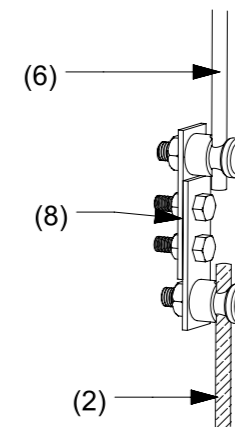
Detail B
 (4): PVC earth inspection pit 250mm diameter earth symbol to be fixed on top cover, ELEMKO code 60 09 028, tested according IEC EN 62561 - 5, 50 kN



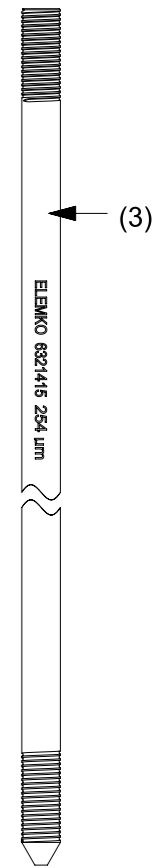
Detail C
 (5): Earthing plate ELEMKO code 63 00 150



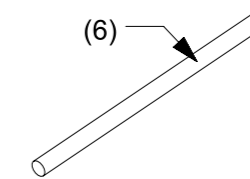
Detail G
 (7): Cu fastener with plastic spacer ELEMKO code 61 21 102, for round conductor 8-10mm tested according IEC EN 62561 - 4 and (6) Ø8 round conductor



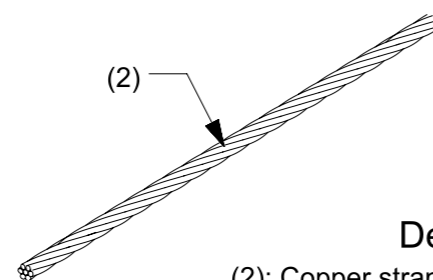
Detail D
 (8): Cu test clamp ELEMKO code 62 25 040 tested according IEC EN 62561-1 with (2) stranded copper conductor and (6) round conductor



Detail E
 (3): Steel copper bonded earth rod 250µm, 5/8", 1500mm, ELEMKO code 63 21 415 tested according IEC EN 62561 - 2



Detail F
 (6): Copper conductor 8mm diameter ELEMKO code 64 20 008 tested according IEC EN 62561 - 2



Detail H
 (2): Copper stranded conductor 50mm² ELEMKO code 64 20 108 tested according IEC EN 62561 - 2

All dimensions in mm

		Title:	
		Down conductor and earthing system	
FIRST ISSUED	June 2018	DRG NO.	
DRAWN BY	Dionysopoulos G.		
CHECKED BY	Kavvadias L.	066-3	
APPROVED BY	Kokkinos N.	+30 210 28 45 400 www.elemko.gr elemko@elemko.gr	
SCALE	None		
ISSUANCE DATE	March 2020	SHEET 1 OF 1	