

SAFETY & SECURITY COMPANY PROFILE



For over 40 years, SSS has been a reliable partner in excellence, completing over 1,500 projects annually across more than 10 countries with a focus on quality and precision.

With a combination of professionalism, expertise, commitment, and skill, SSS has become the key to success. Quality is not just a promise; it's our legacy!

+961 25 803 965 | +961 71 260 007

www.sss-lb.com

sales@sss-lb.com



Antelias, Seaside, Beside AISHTI, SSS Bldg.
Bchamoun, Behind Louise Wegmann, SSS Bldg

WELCOME TO
NEXT LEVEL
LIVING



CERTIFIED BY



Our Services



Lightning Protection System



CCTV Surveillance System



Earthing Protection System



Fire Alarm System



Complete Security System



Intrusion Alarm System



Emergency Luminaire System



Intelligent Doors Solutions

WHY CHOOSING SSS



Commitment to Excellence



Proven Expertise



Innovative Solutions



Reliability and Trustworthiness



Strong Industry Network



Safety and Compliance





SSS Company is the exclusive distributor of **ELEMKO** in Lebanon, providing top-notch solutions for lightning protection, earthing, and surge protection systems. Elemko, a worldwide leader with more than **50 years** of expertise, is celebrated for its commitment to innovation, dependability, and excellence.

LIGHTNING PROTECTION SYSTEM



A lightning protection system (LPS) is designed to protect structures from lightning strikes. It includes air terminals (lightning rods), down conductors, and a grounding system. These components work together to safely direct the lightning energy into the ground, preventing damage to the structure and electrical components.

**For a safer environment,
the highest precautions must be taken.
We're here to help protect your assets, BETTER!**

Specialized in

- ◆ **Global Lightning Protection Systems:** Safeguarding structures from electrical strikes.
- ◆ **Earthing Systems:** Ensuring safety and stability for electrical installations.
- ◆ **Surge Protection Devices:** Protecting sensitive equipment from voltage spikes.
- ◆ **Comprehensive Studies and Testing:** Delivering data-driven solutions for optimal performance.

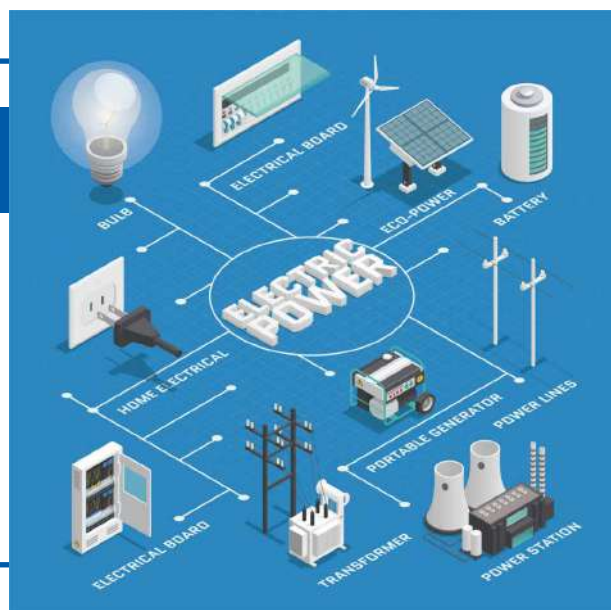
ELEMKO EARTHING PROTECTION SYSTEM

Electrical Earthing is essential for preventing electrical hazards and ensuring the efficient operation of electrical systems. It involves connecting electrical systems to the ground, allowing excess electrical charges to dissipate safely. This practice protects people and equipment from potential damage or injury, maintains proper voltage levels, and enhances system performance and longevity.



Shielding

**your assets
and environment
with
Safe Earthing Solutions.**



Made in Greece 



End-to-End System Solutions

- **Consultancy for Project Design:** Expert advice and planning for earthing, surge, and lightning protection systems to ensure optimal design and safety
- **Installation Services:** Professional installation of earthing, surge, and lightning protection systems to meet safety standards.
- **Risk Assessment:** Comprehensive risk assessment following site inspection to identify potential hazards and ensure system reliability.
- **Maintenance Services:** Ongoing maintenance of both existing and newly installed protection systems for long-term efficiency.
- **System Testing and Documentation:** Testing of both existing and new protection systems, with comprehensive documentation provided after the testing process.



ENSURING

your systems are operating and safeguarding your infrastructure.



Scan here to protect your loved ones and assets!



www.sss-lb.com

Made in  

optima[®]

White[®]
ROSE


ArmaKontrol

CAME  **ÖZAK**

FOR THE COMFORT AND SAFETY OF EVERYTHING YOU VALUE IN LIFE



Made in  

optima[®]

**White
ROSE**


ArmaKontrol

CAME  **ÖZAK**

Delivering Top-Quality Products and Services in the Security Industry



Made in   

optima[®]

**White
ROSE**

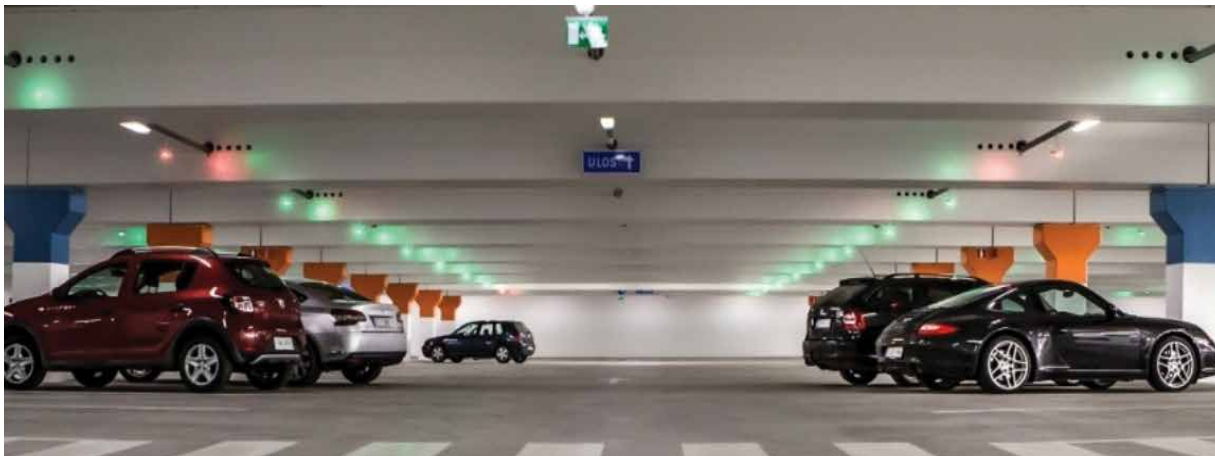

ArmaKontrol


PARKONIC
smart parking solutions

CAME  ÖZAK

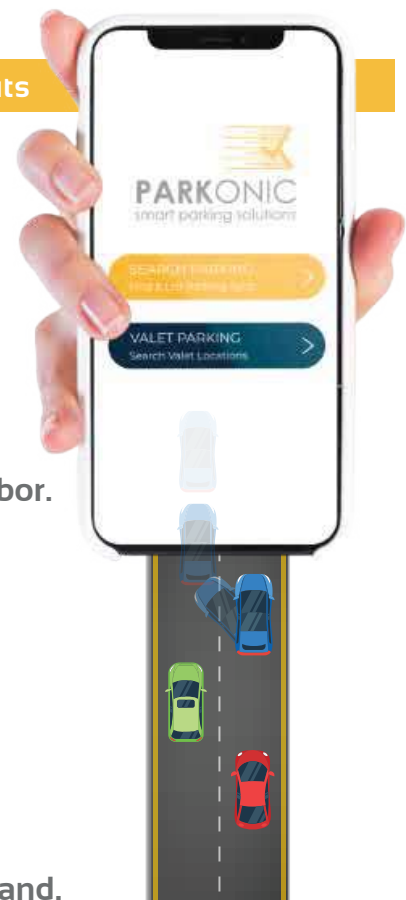
Parking Management System

A parking management system is a solution to help you manage your car park. Such systems often include features such as payment processing, monitoring & enforcement, access control and reporting.



A Management Parking System offers numerous benefits

- Pre-Arrival Parking Management.
- Enhanced User Experience and Convenience.
- Optimized Parking Space Utilization.
- Cost Savings Through Automation and Reduced Labor.
- Reduction in Traffic Congestion and Improved Flow.
- Reduced Risk of Accidents and Improved Safety.
- Real-Time Monitoring and Maintenance Alerts.
- Real-Time Monitoring and Analysis of Parking Demand.



Made in 

optima®

White
ROSE

ArmaKontrol

PARKONIC
smart parking solutions

CAME ÖZAK

The Future of Convenient Parking



A Management Parking Payment System is a technology-driven solution that streamlines the parking payment process.

It allows users to pay easily while providing administrators with tools to manage, monitor, and optimize parking operations efficiently. This system is equipped with many capabilities that enhance the overall parking experience for both users and administrators.

- ◆ Ability to work in integration with access systems (Barrier, Gates, etc.)
- ◆ Dedicated system management (Administrator, Operator, Security guard, etc.)
- ◆ Parking lot-based and operator-based revenue tracking.
- ◆ System monitoring and documentation with daily, monthly, status-based reports.
- ◆ The SCADA system can be accessed globally via a web server.
- ◆ Detecting plateless vehicles or vehicles with unreadable license plate.

SAIMA

Intelligent Door Solutions

Revolving Doors

SAIMA Security's Revolving Doors combine stylish design with top-notch security, providing a safe and welcoming entrance. With a range of smart access options, they offer the perfect balance of aesthetics and protection.



Key features of SAIMA Security's Revolving Doors include:

Stylish Design	Combines modern aesthetics with functionality
Top-Notch Security	Provides enhanced protection for high-traffic entrances
Smart Access Options	Includes advanced technology for secure entry control
Durable Construction	Built to withstand frequent use in various environments
Energy Efficiency	Cuts energy use by maintaining climate control
Smooth Operation	Allows smooth access without compromising security

SAIMA

The Art of Security

Tripod and Full-height Turnstiles

SAIMA Tripod and Full-Height Turnstiles offer durable, stylish, and reliable access control. They are designed to prevent climbing and withstand the elements, combining performance with elegant design.

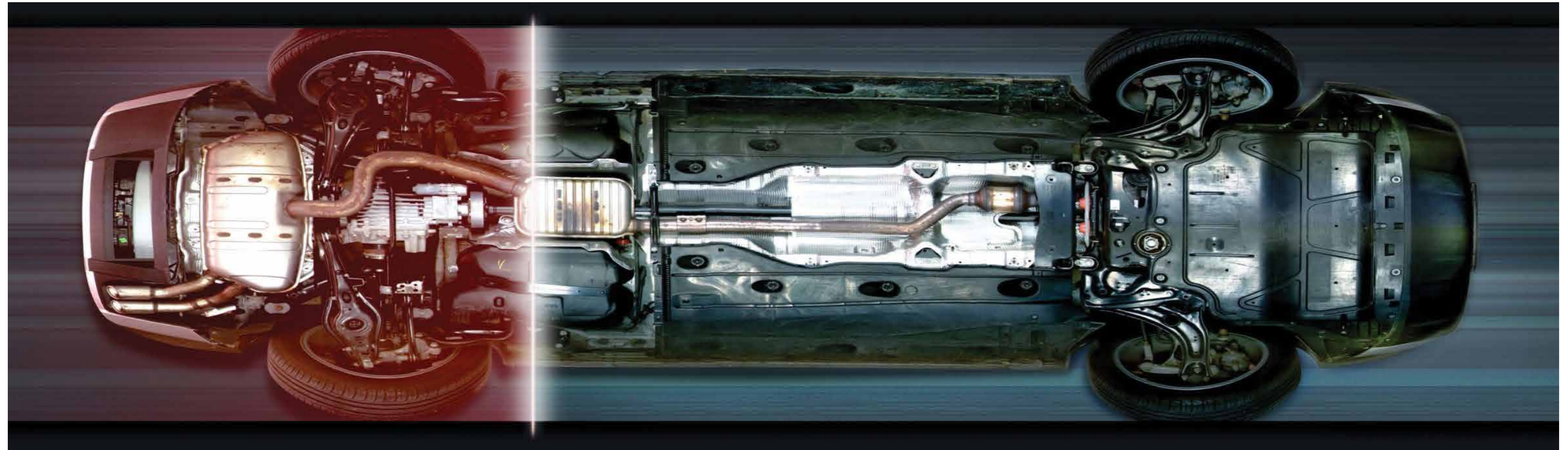






Automatic Pedestrian Gates: Security & Effortless Access



SECUSCAN®

The SecuScan® Under Vehicle Inspection System, with its advanced scanning technology, enables the quick and easy detection of hazardous objects (such as explosives, drugs, smuggled goods, etc.) and hidden individuals, without disrupting traffic flow at checkpoints or putting safety personnel at risk, as it operates outside of a protected control station.



<p>HIGH RESOLUTION</p> 	<p>As the innovation leader SecuScan® provides high resolution images of the undercarriage of scanned vehicles, which guarantees best security standards.</p>
<p>Full View Images</p> 	<p>With its innovative technology SecuScan® displays the full undercarriage (incl. door sills / running boards) of scanned vehicles in one high resolution picture, which allows continuous zooming up to finest details.</p>
<p>Clear Color Images</p> 	<p>For state-of-the-art security standards SecuScan® provides crystal clear color images, which today is vital to secure safety at any kind of gate.</p>
<p>Automatic Foreign Object Detection</p> 	<p>SecuScan® provides automatic identification of foreign objects or modification to a vehicle's undercarriage and highlights these changes to assist the guards for fast inspection.</p>

SECUSCAN®

SecuScan®: Swift Detection, Unmatched Protection.

Leveraging its high-resolution imaging technology, SecuScan® is now widely utilized for the automated detection and identification of safety and quality issues in vehicles, ensuring thorough inspections with precision and efficiency.

The SecuScan® Under Vehicle Monitoring System comes in various versions, available both as a fixed installation and as a portable system.



SecuScan® as a Permanent System

SecuScan® as a Mobile System

Made in   

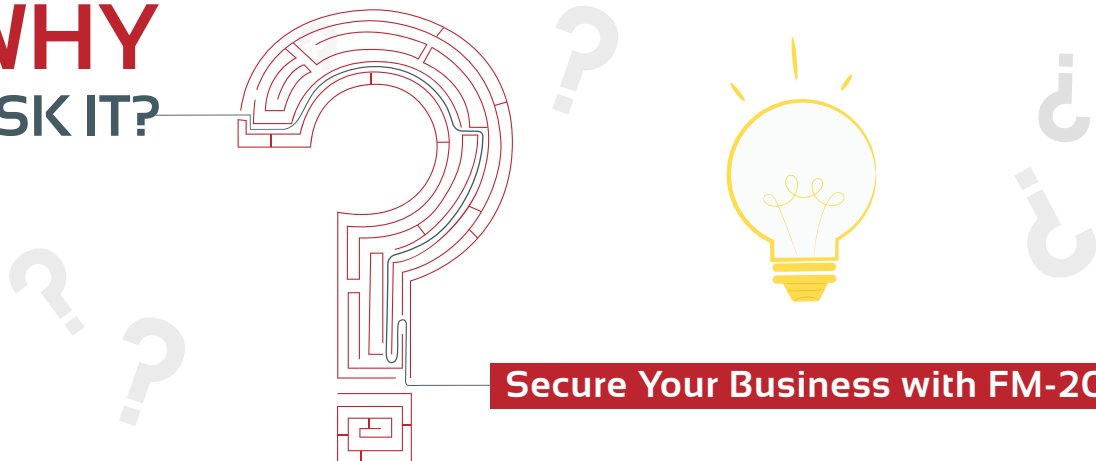


Fire Suppression System

Protect what matters most with a **fire suppression system**. Fast, reliable, and tailored to your needs, it quickly detects and controls fires, minimizing damage and ensuring safety. Peace of mind is just a system away.



WHY
RISK IT?



Secure Your Business with FM-200



FM-200 Fire Suppression System



The **FM-200** Fire Suppression System quickly extinguishes fires using a clean, non-toxic agent.

- **Fast Acting.**
- **Environmentally Friendly.**
- **Non-Toxic.**
- **Highly Effective.**
- **Automatic Detection.**
- **Space-Saving Design.**
- **Fast Recovery.**
- **Fast Discharge Time.**

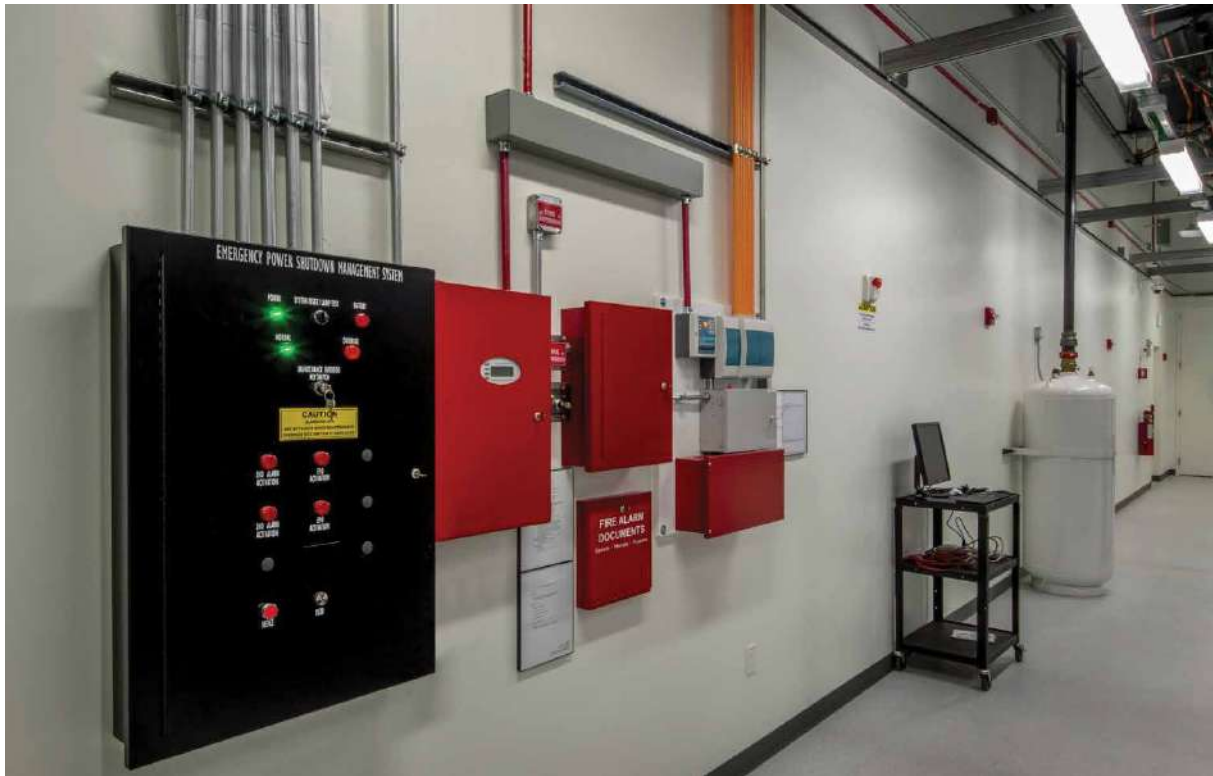
It provides effective protection for sensitive areas without leaving residue or causing damage.



Made in   



For A Safer World!



Delivering Top-Quality Products and Services in the Security Industry

YOU ARE COMPLETELY SECURE AND PROTECTED UNDER OUR CARE





Olympia Electronics & Asenware specialize in cutting-edge electrical and electronic solutions for safety and communication. The two companies focus on quality and customer satisfaction.

- ***Conventional Fire Alarm Control System LPCB Approved.***
- ***Addressable Fire Alarm System Control System LPCB Approved.***
- ***Two Wire Addressable Fire Alarm Control System.***
- ***Wireless Fire Alarm System.***
- ***Explosion proof Fire Alarm System.***
- ***Linear Heat Detection System.***
- ***Smoke Detector.***
- ***Water-Proof Fire Alarm System.***
- ***Aspirating Smoke Detection System.***





Suppression System For Electrical Cabinets

Our **suppression system** for electrical cabinets quickly detects fire risks. It not only protects your equipment from potential damage but also ensures your operations remain uninterrupted, minimizing downtime and maximizing efficiency for the long term.



Fire Extinguishing System



Fire Detection Tube Suppression System



Fire detection & extinguishing device



Automatic Fire Suppression System



Emergency System

Prepared for Anything, Ready for Everything!

- *Fire Telephone System.*
- *Voice Evacuation System.*
- *Centralized monitoring emergency luminaire system.*
- *Conventional emergency light.*



Centralized Monitoring EXIT Sign



Fire Telephone Control Panel



Voice Evacuation Control Panel

Made in Spain 



Total Security, Absolute Protection

Driven by our "Innovation for All" philosophy, we provide a comprehensive range of security products, including IPCs, NVRs, HDCVI cameras, HCVRs, PTZ cameras, thermal cameras, access control systems, video intercoms, alarms, mobile and traffic solutions, display and control units, VMS, and more.



10+
ai algorithms



10+
ai algorithms



Privacy
Protection+



Intelligent
Audiovisual

PTZ Camera

Powerful surveillance cameras designed for clarity, wide coverage, and extreme durability. Built to perform in any environment, they capture every detail with precision and reliability.





Video Intercoms

A Dahua **Video Intercom** is a communication system that allows clear video and audio interaction between visitors and building occupants. It features high-definition video, two-way audio, and remote access control, enhancing security and convenience in residential and commercial settings.

Understandable, Effortless and Intuitive Operation

DAHUA VIDEO INTERCOMS

A Dahua **Video Intercom** stands out with its sleek design, advanced HD video quality, and easy integration with other Dahua security products, providing a seamless and reliable user experience.

Dahua Video Intercom Innovation for Comfortable Living





Access Control

Dahua **Access Control** solutions provide enhanced security through advanced features like biometrics, smart cards, and real-time monitoring.

With biometric options such as fingerprint scanning and facial recognition, these systems offer a higher level of authentication, ensuring only authorized individuals gain access.



Dahua Access Control

Efficiency, Accuracy, Convenience & Security

Enhancing Security With Advanced Features

DAHUA ACCESS CONTROL

They also support smart cards for easy, secure entry, and provide real-time monitoring for tracking access events and maintaining security.

Dahua's solutions are customizable, making them ideal for businesses and organizations of all sizes, and allowing for tailored access management to meet specific security needs.



Intrusion Alarm System

Our **Intrusion Alarm System** delivers cutting-edge security for both homes and businesses, with real-time monitoring and quick response capabilities.

Featuring motion detectors, door/window sensors, and remote surveillance, it ensures reliable protection against unauthorized access. Its easy installation and intuitive interface offer peace of mind, while customizable options cater to specific security requirements.



Connect from wherever you are and share access with your family and friends





Reliability



Flexibility



Quality

Protect your home, simply

The only Security Systems that detect break-in attempts and alert before Intrusion



