

ELEVATORS & ESCALATORS

COMPANY PROFILE



For over 40 years, SSS has been a reliable partner in excellence, completing over 1,500 projects annually across more than 10 countries with a focus on quality and precision.

With a combination of professionalism, expertise, commitment, and skill, SSS has become the key to success. Quality is not just a promise; it's our legacy!



+961 25 803 965 | +961 71 260 007

www.sss-lb.com

sales@sss-lb.com



Antelias, Seaside, Beside AISHTI, SSS Bldg.  
Bchamoun, Behind Louise Wegmann, SSS Bldg.

WELCOME TO  
**NEXT LEVEL**  
L I V I N G



## CERTIFIED BY



## Our Services



Premium Lift Installation



Modernization



Homelift Installation



Maintenance



Mobility Products



Spare Parts

## WHY CHOOSING US?

- ✓ Commitment to Excellence
- ✓ Innovative Solutions
- ✓ Strong Industry Network
- ✓ Proven Expertise
- ✓ Reliability and Trustworthiness
- ✓ Safety and Compliance



Made in Japan 

# TOSHIBA

Leading Innovation >>>

Appearances Worthy of the Building



## Toshiba Elevator and Building Systems Corporation

Toshiba manufactures elevators by applying the latest technology and improved elevator development skills. It has built a framework which encompasses all aspects in order to provide clients with high quality products.

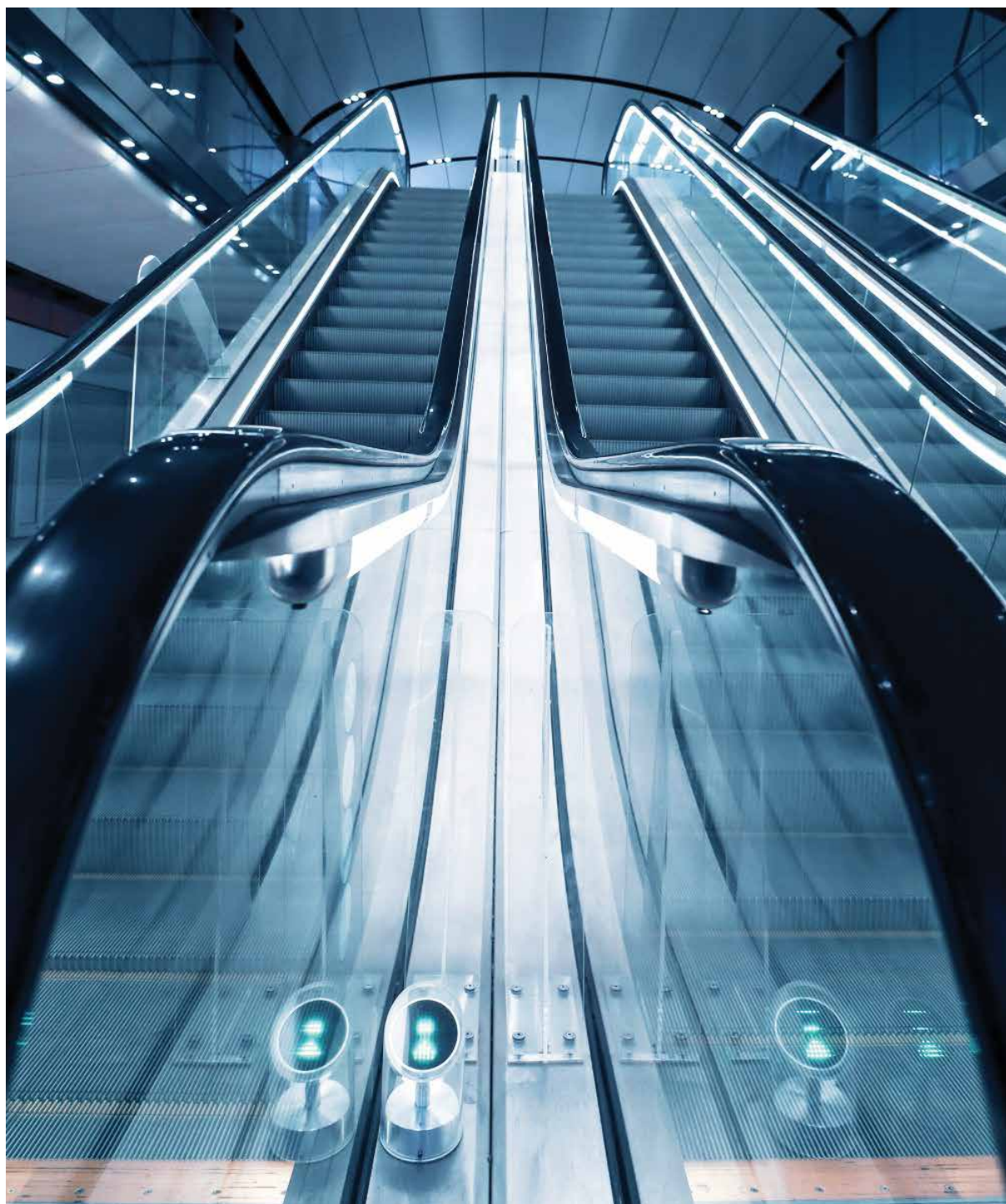
Toshiba's line of elevators fully cover the demand of users, creating unlimited possibilities for vertical transportation.

Made in Japan 

# TOSHIBA

## Leading Innovation >>>

Toshiba's commercial escalator goes in for innovation, incorporating the design idea of supreme humanization, sophisticated design, and smooth and comfortable operation. Toshiba escalators are used in hospitals, high-class office buildings, high-grade hotels, central business districts, large-scale shopping centers, and etc. to add a flowing scenery line for the modern buildings.



Made in Germany 

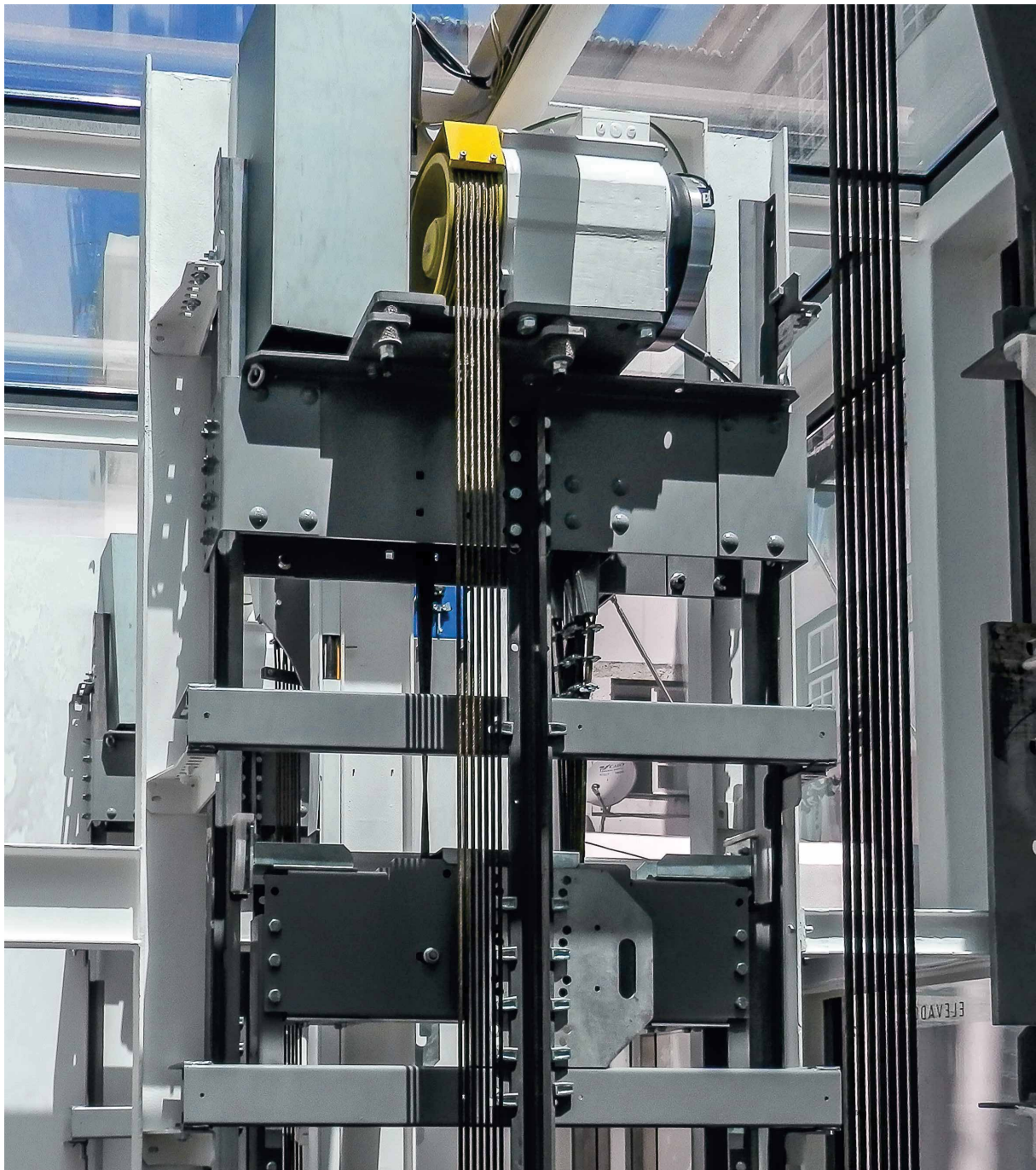


WITTUR

Die besten Liftmaterial-Aufzüge mit den besten Wittur Komponenten.

**Wittur elevators** are known for their exceptional engineering and modern design, making them a top choice for any building. They combine advanced technology with smooth, reliable rides and energy-efficient systems.

The sleek and stylish aesthetics enhance the overall look of the space, while customizable options ensure the perfect fit for different architectural needs.



Made in Germany 

---



WITTUR

Building the best Liftmaterial elevators with the best components.



La création, la recherche et l'innovation sont les axes de développement qui permettent à nos clients de trouver la réponse la plus adaptée à leurs besoins.



**Sodimas Elevators** is a leading provider of high-quality vertical transportation solutions, offering custom-made elevators for residential, commercial, and industrial buildings. Known for innovative designs, advanced technology, and sustainability.

It delivers passenger, freight, and panoramic elevators that combine functionality with modern aesthetics.

## Features

- Machine location options (machine below or machine above)
- Energy Efficiency
- Advanced Control Systems
- Eco-friendly Solutions
- Wide Range of Applications
- Customizable Designs



Made in France 



**SODIMAS** est une technologie brevetée innovante unique au monde





## Giant KONE

*Building a Spectacular Future*

Giant Kone Elevators is transforming vertical transportation with advanced elevator solutions that prioritize innovation, efficiency, and sustainability.

Engineered to elevate your buildings and enhance experience, our systems ensure smooth, dependable travel.



## Raising Standards, Elevating Spaces

With a focus on safety and performance, we offer a wide range of customizable options tailored to meet the unique needs of every building. Whether for residential, commercial, or industrial spaces, Giant Kone Elevators delivers exceptional quality, reliability, and cutting-edge technology to keep your building moving efficiently.

**Doppler's Cargo Lifts** are forged to withstand every hardship, satisfying even the most demanding requirements of functionality.

**Doppler's Car Lifts** are meticulously designed down to the smallest detail, ensuring superior quality.

Installed in busy private and public parking areas, they continuously transport every vehicle with the utmost safety.



Made in Italy 



Updynamic designs and manufactures industrial Good-lifts in compliance with Machinery Directive 2006/42/EC. It offers high quality lifts with the highest safety standards.





A complete range of industrial hoists meets market demands and is designed to serve various sectors, from logistics to manufacturing. These hoists provide seamless vertical transportation for goods, optimizing space and improving operational efficiency



Updinamic industrial lifts respond comprehensively to market demands, providing versatile, state-of-the-art systems.



Made in  



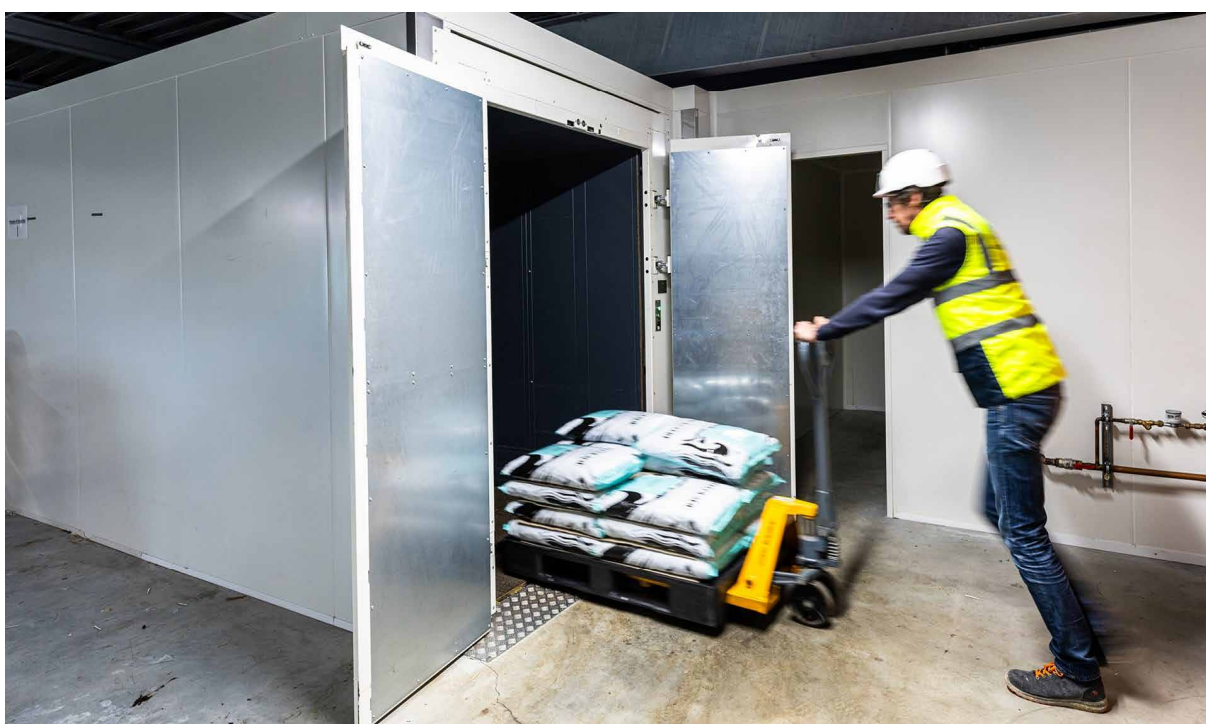
Service lifts are the ideal solution in restaurants, hotels, chemists, hospitals, offices, shops, and multi-level houses. They provide an easy and uncomplicated way to move packages, letters, medicines, crockery, and cutlery.



Made in  

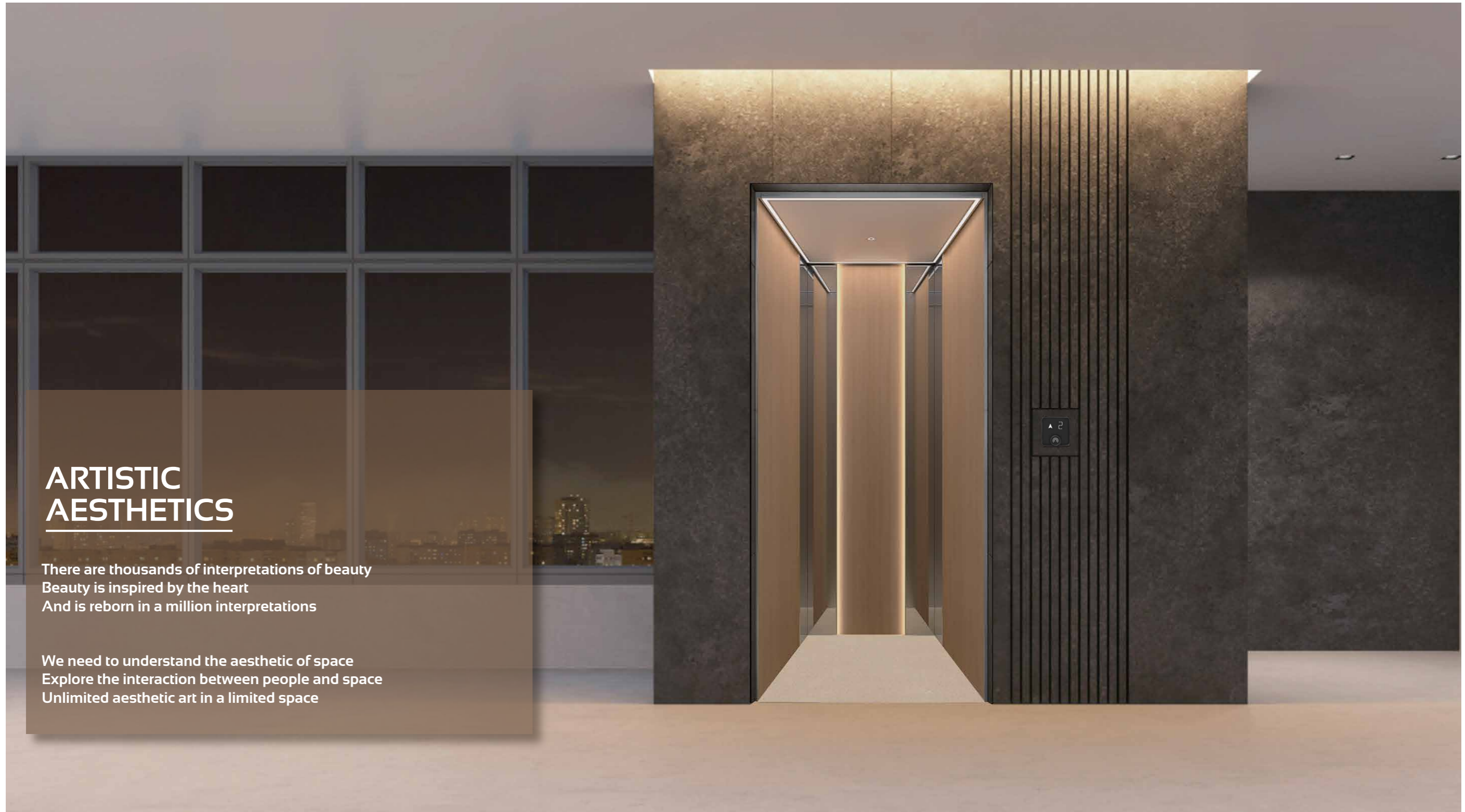


This describes our lifts perfectly ✓ Compact ✓ Flexible ✓ Quick & Easy to install





Villa and Residential lifts



**ARTISTIC  
AESTHETICS**

There are thousands of interpretations of beauty  
Beauty is inspired by the heart  
And is reborn in a million interpretations

We need to understand the aesthetic of space  
Explore the interaction between people and space  
Unlimited aesthetic art in a limited space



**NOVA** Home Lifts are crafted to improve mobility both inside and outside buildings. They are designed to seamlessly adapt to various needs, environments, and locations, ensuring exceptional accessibility and convenience for all users.



**Bespoke Design**



Small lifts for any location: New or existing buildings, indoors or outdoors, public or private spaces.

**Quality**



Our customers always acknowledge our attention to detail and the highest quality standards.

**Energy Efficiency**



Energy-Efficient homelifts that reduce volume and maximize available space.

**Safety & Comfort**



Our products ensure a safe and comfortable ride for all users, turning it into a pleasant experience.

**Design**

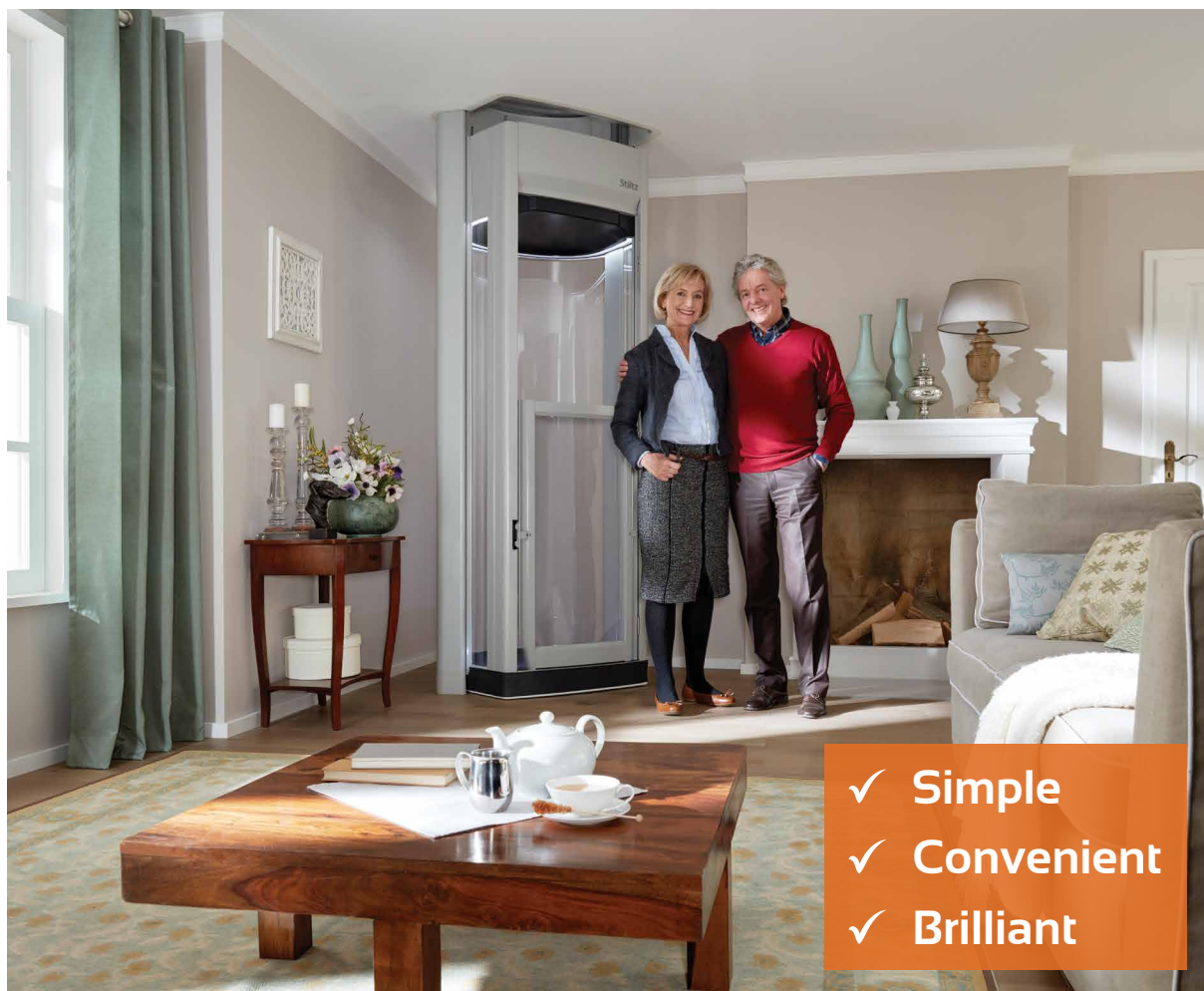


Classy and elegant home elevators with refined shapes and valued materials.





Stiltz **Duo+** is a compact and stylish home lift designed to seamlessly blend into any living space. With its elegant curved design, it offers both functionality and aesthetics, making it a perfect addition to any home. It is ideal for those who need assistance with mobility. The Duo+ provides a smooth and comfortable ride.



### Benefits of Stiltz HomeLift



Small Footprint



Quiet Travel



Fast Installation



Economical to Use



Unique Dual Rail System



Self-Contained Drive System



- ✓ Flexible
- ✓ Discreet
- ✓ Functional



Small Footprint



Fast Installation (2 Days)



4A monophase



Quiet Travel



Self-Contained Drive System



Unique Dual Rail System



Wide Entry/Exit



Easy Access

Stiltz **Trio+** is a spacious home lift designed to carry a full-sized wheelchair or three people. The combination of style and elegance has been perfectly balanced and the lift has clear sides which enables it to blend seamlessly into the home.

Made in Austria 

# Technology

To make your life easier

Our complete range of lifting solutions

**LEHNER**  
LIFTTECHNIK



Chair Stairs Lifts



Vertical Platform Lifts



Inclined Platform Lifts

Pool Lifts



Made in United Kingdom 



**ACCESS BDD –  
YOUR PARTNER IN  
HOME MOBILITY  
SOLUTIONS**

**Enjoy your garden like never before**

Specializing in innovative stairlifts and home lift solutions, we empower individuals with mobility challenges by improving their independence and quality of life through safe and reliable options that enhance everyday living.



**Designed with your confidence and comfort in mind**

# IdealPark



Get the best Car Turntable and Rotating Platforms!

• Space-saving

• Time-saving

• Durability

## Park with Ease

Our car turntables make parking effortless, allowing for easy vehicle rotation in tight spaces. With sleek design and high efficiency, they save time, reduce damage risk, and add a modern touch to any property.



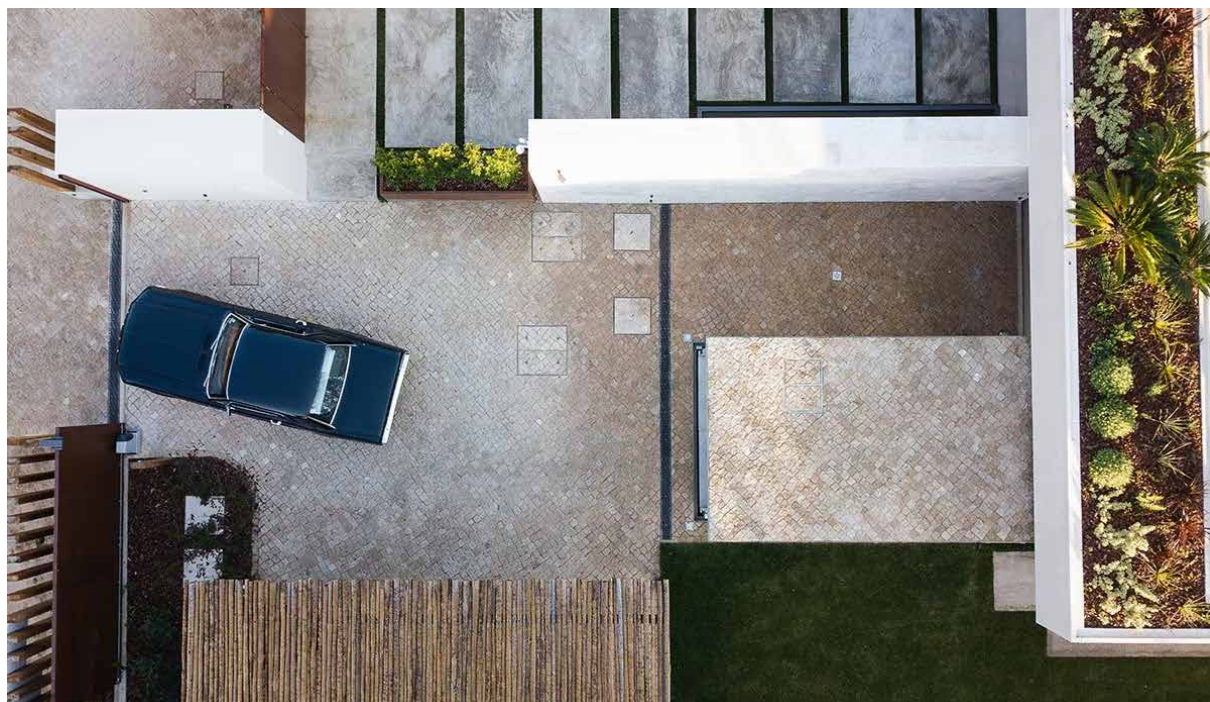
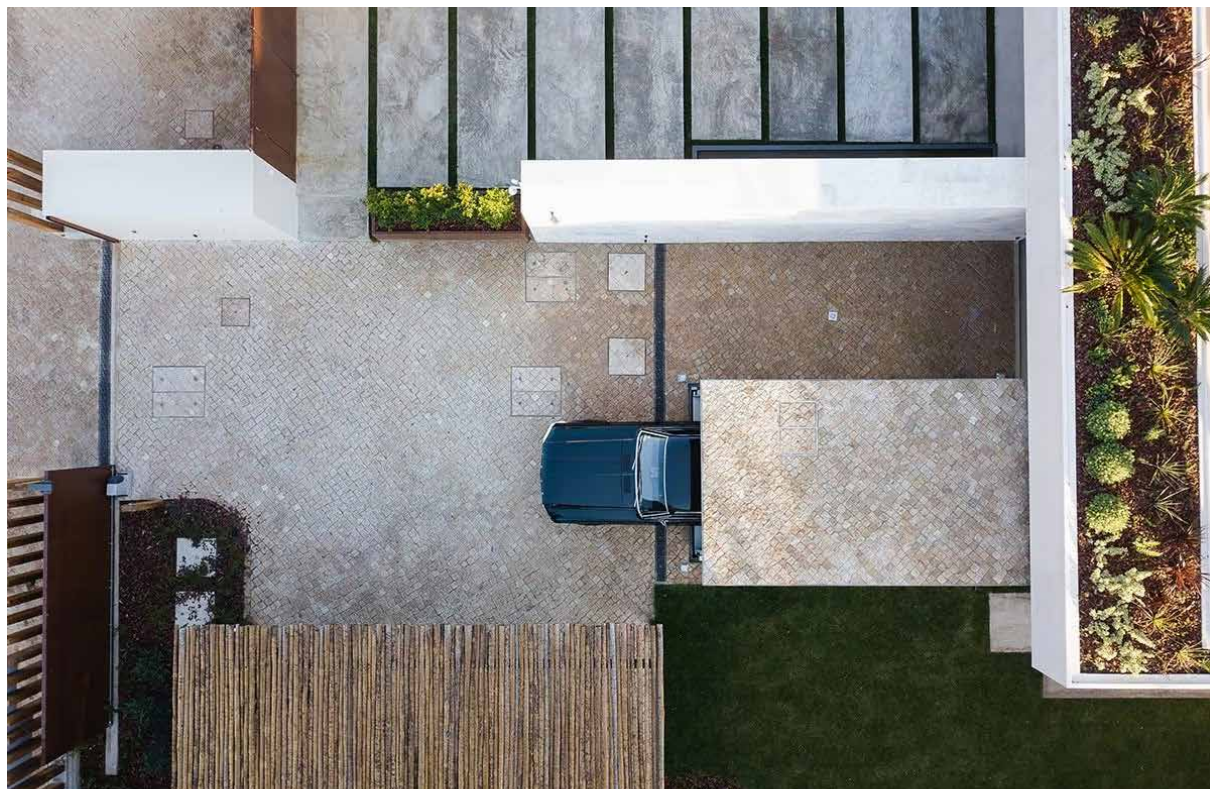
Park **SMARTER**, Not Harder!

## The Future of Parking is Here: IdealPark's and Ecospace's Lift Technology

Transform your parking with **IdealPark's** and **Ecospace's** lifts – the smart solution to improve efficiency and access. Designed for residential and commercial use, our system combines advanced technology and durability for a reliable solution.



## ADDING VALUES TO YOUR PARKING LOT



Made in Italy 

# IdealPark



**Double Parking, Double Convenience!**

With our double parking system, you get double the convenience, more space to park, and a smoother, more organized parking experience every time you drive.

## Discover the Best Features of the IdealPark Car Parking System

- Maximized parking capacity with minimal space usage.
- Simplified access for drivers with easy-to-follow guidelines.
- Real-time parking management through integrated technology.
- Reduced traffic disruption and faster parking turnaround.
- Enhanced safety for pedestrians and cyclists.
- Flexible parking spaces that fit different types of vehicles.





Made in Italy 

# IdealPark

**ECOSPACE**  
SOLUZIONI DIMENSIONALI

**Double Parking, Double Convenience!**

Experience the convenience of our double parking system, where efficient use of space and a smoother parking flow make every trip easier.



Made in Germany 



Opening Doors To Innovation and Security

## Beautiful, Efficient and Affordable Solutions

- Garage doors
- Fire resistant doors
- Sound proof doors
- Security & bullet resistant doors
- Industrial doors
- Roller shutters doors
- Rapid roll doors
- Loading solutions
- Cold storage doors





We are a leading provider of advanced solutions for residential, commercial, and industrial applications. Our high-quality, durable products focus on innovation, energy efficiency, and sustainability.

Cold Storage Doors



High Speed doors





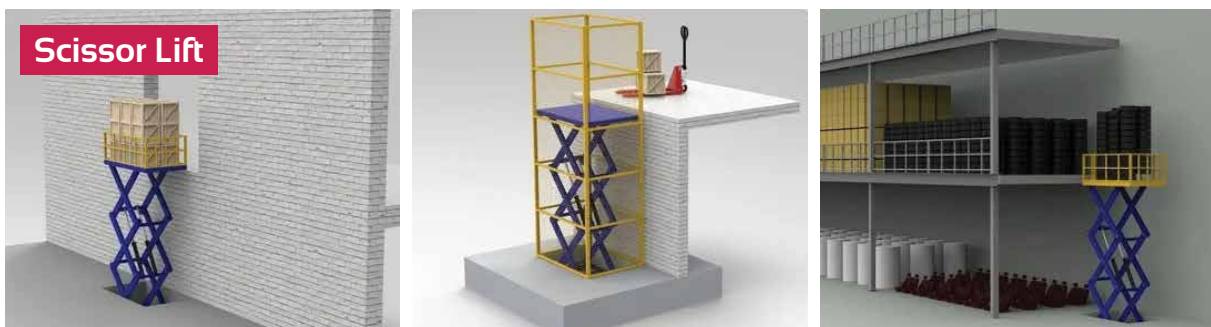
Our **Hydraulic Cargo Lifts** are designed to handle heavy loads with precision and reliability.

Built for smooth, efficient operation, they enhance safety and productivity across various industrial environments, from warehouses to factories.



A **Scissor Lift** is an essential piece of equipment designed to provide stable and secure vertical access to elevated work areas.

Utilizing a scissor-like mechanism, it enables smooth and efficient lifting of personnel and materials for tasks such as maintenance, construction, and warehousing, offering increased safety and productivity in various industries.





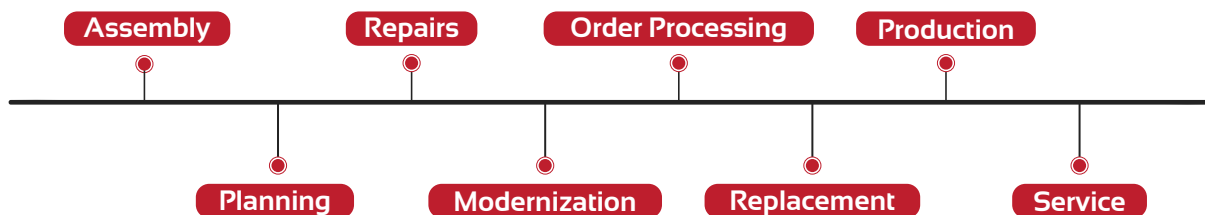
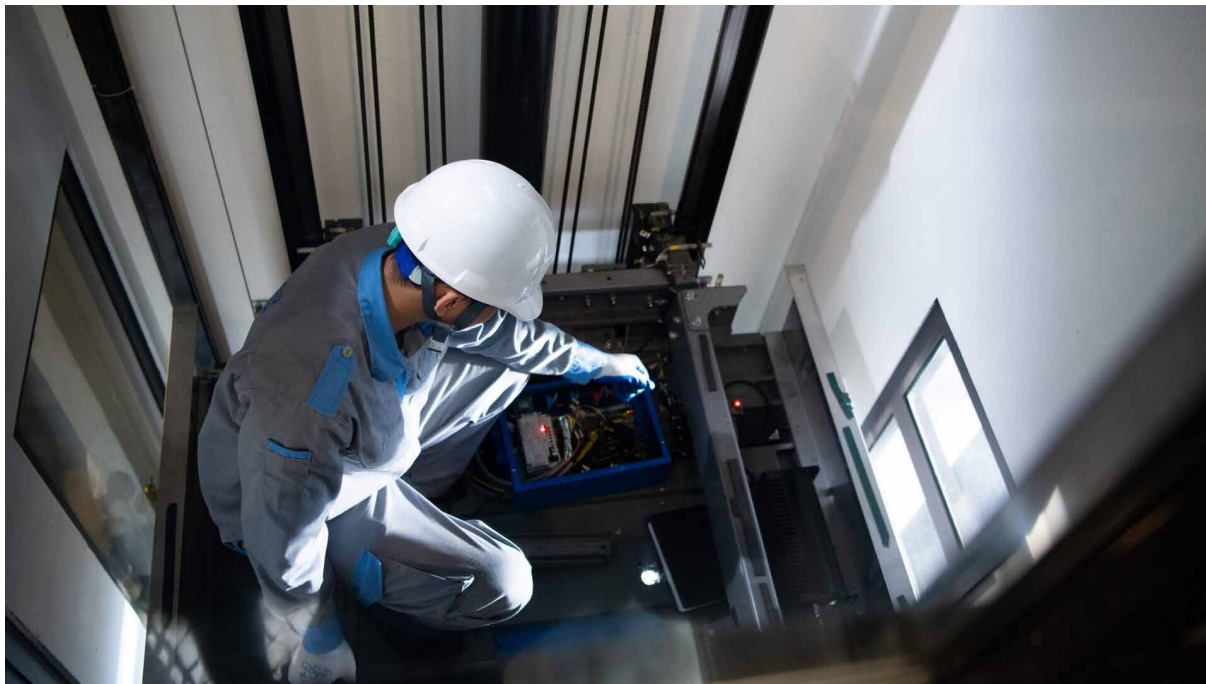
A **Loading Dock Lift** is a platform designed to bridge the height gap between a loading dock and trucks, providing a smooth and safe process for loading and unloading goods.



A **Dock Leveler** is a device used at loading docks to bridge the gap between the dock and a truck, making loading and unloading safer and easier. It adjusts to different heights, ensuring a smooth, level surface for moving goods.



**Keep Things Moving Smoothly with Expert Care!**



We handle the maintenance of elevators and escalators across various brands to ensure they operate at a high level of performance. Our comprehensive preventive maintenance packages are designed to keep the lifts running smoothly and maintain passenger safety.

We use genuine manufacturer parts from multiple brands to ensure the proper operation of the units. Our warehouse is stocked with the necessary spare parts, allowing for quick repairs and uninterrupted service.



### Modern Solutions for a Smoother, Faster Ride!

Upgrading older components allows us to adopt the latest technologies and features, significantly improving safety with advanced, dependable systems.

This upgrade also leads to considerable energy savings, thanks to improved efficiency and reduced consumption, supporting a more sustainable operation.

**Additionally**, this modernization boosts overall operational efficiency by streamlining processes and minimizing downtime.

It elevates user comfort by offering a more refined and enjoyable experience, ensuring that the system meets contemporary standards for performance and luxury.

**TOSHIBA**  
Leading Innovation >>>



WITTUR

**SODIMAS**<sup>®</sup>  
ascenseurs



