

Products catalogue

**one  
level  
ahead**



***UP* DINAMIC**



# Index

## GENERAL INFO

- ▶ Products families p.4
- ▶ Fields of application p.5

## MODELS

- ▶ UP p.6
- ▶ DL p.10
- ▶ UPRT p.14

## TECHNICAL SPECIFICATIONS

- ▶ Operator-on-board system p.18
- ▶ Available outfitings p.20
- ▶ Surfaces p.21
- ▶ Metal structure p.22
- ▶ Landing doors p.23
- ▶ U-Cloud p.26

## TECHNICAL DRAWINGS

- ▶ UP3-6 p.30
- ▶ UP10-15 p.32
- ▶ UP20-25 p.34
- ▶ DL2 Smart p.36
- ▶ DL2 p.38
- ▶ DL4 p.40
- ▶ UP3RT p.42
- ▶ UP10-15 RT p.43
- ▶ UP15-20RT p.44



# Products families

## UP

from 300 Kg to 2500 Kg  
Travel up to 16 meters  
Certified for transport  
of one operator on board (attended)

## DL

from 2000 Kg to 5000 Kg  
Travel up to 16 meters  
Certified for transport  
of one operator on board (attended)

## UPRT

from 300 Kg to 2000 Kg  
Travel up to 16 meters  
Certified for transport  
of one operator on board (attended)

## Certification

The plants are built in Machinery Directive 2006/42/EC and already comply with the new machinery regulation 2023/1230/EU, covered by the CE type certification issued by a notified European body.

Updianamic also has EN1090 certification and RINA certified welding personnel.





# We cover the largest industrial elevation market.

## FIELDS OF APPLICATION



Logistic sector



GDO - Large scale retailers



Manufacturing sector



Food processing



Wine and catering



Chemical industry



Automotive



Carpentry and furniture industry

# UP

**One-column hydraulic lifting system certified for transport of goods and one operator on board, with capacity ratings starting from 300 Kgs up to 2500 Kgs.**





### UP for goods only

**What is it?**

A goods-lift designed for the transportation of goods only.

**What is it doing?**

It optimizes the loading surface for the transport of large quantities of materials.

**Why do you need it?**

Ideal for connecting multiple levels with operators at the floors. Suitable for integration with automated industrial plants.

### UP SPB with operator on board

**What is it?**

A goods-lift designed for transporting goods with an operator on board.

**What is it doing?**

It allows the operator to safely maneuver the goods-lift while on board.

**Why do you need it?**

Designed for connecting multiple levels with an operator on board. It improves usability and work capacity by reducing the loading/unloading operations timings.

**UP3**

300 Kg

**UP6**

600 Kg

**UP10**

1000 Kg

**UP15**

1500 Kg

**UP20**

2000 Kg

**UP25**

2500 Kg

## UP | Models and main technical features

	UP3	UP6	UP10	UP15	UP20	UP25
Max capacity [Kgs]	300	600	1000	1500	2000	2500
<b>C</b> Max travel [m]	7	7	16	16	16	16
Number of stops	5	5	5	5	5	5
Accesses	1/2/3	1/2/3	1/2/3	1/2/3	1/2/3	1/2/3
<b>P</b> Platform depth [mm]	1300	1300	2000/2500	1700/1900	2000/2400	1800/2000
<b>L</b> Platform width [mm]	1700	1700	2800/2500	2500/1900	2800/2400	2500/2000
<b>F</b> Pit [mm]	120	120	150	150	250	250
<b>T</b> Min headroom [mm]	2150	2150	2150	2150	2150	2150
<b>J</b> Brackets distance [mm]	600	600	1000	1000	1000	1000
<b>S</b> Guide gauge [mm]	660	660	1000	1000	1000	1000
Fx Each cylinder load [KN]	12	18	30	35	40	45
Minimum speed [m/s]	0.10	0.10	0.10	0.10	0.10	0.10
Max speed [m/s]	0.15	0.15	0.15	0.15	0.15	0.15
Floor operation	Automatic	Automatic	Automatic	Automatic	Automatic	Automatic
On-board operation	Operator on board	Operator on board	Operator on board	Operator on board	Operator on board	Operator on board
Power supply	Single-phase	Single-phase	Three-phase	Three-phase	Three-phase	Three-phase
Switchboard	Pre-wired	Pre-wired	Pre-wired	Pre-wired	Pre-wired	Pre-wired
Clamping levelling device (standard)	1	1	2	2	2	2
Additional mechanical hooks (total)	3	3	4	4	4	4
Anchoring walls	1	1	1	1	1	1
Cylinder	1	1	1	1	1	1
Basic motor [kW]	1.5	2.2	3	4	4	5.5
Hydraulic oil	Supplied ISO32	Supplied ISO32	Supplied ISO32	Supplied ISO32	Supplied ISO32	Supplied ISO32
Pipe length [mm]	3000	3000	3000	3000	3000	3000
Maximum working pressure [bar]	80	95/115	90/120/140	110/145/180	145/195	165

Technical drawings

p.30-31

p. 32-33

p. 34-35





# DL

**2 and 4 columns hydraulic lifting system certified for the transport of goods and one operator on board, with capacity ratings from 3000 Kgs up to 5000 Kgs.**





### **DL for goods only**

#### **What is it?**

A goods-lift designed for the transportation of goods only.

#### **What is it doing?**

It optimizes the loading surface for materials only.

#### **Why do you need it?**

Ideal for connecting multiple levels with operators at the floors. Possibility to reach a capacity up to 5000 Kgs or more.

### **DL SPB with on-board operator**

#### **What is it?**

A goods-lift for transporting goods with an operator on board.

#### **What is it doing?**

It allows the operator to safely maneuver the goods-lift while on board.

#### **Why do you need it?**

The extremely robust platform is suitable to transport also a forklift truck and the operator.

### **DL2 Smart**

2000/4000 Kg

### **DL2**

2000/4000 Kg

### **DL4**

4000/5000 Kg

## DL | Models and main technical features

	DL2 Smart		DL2		DL4	
Max capacity [Kgs]	2500	3000	3000	4000	4000	5000
<b>C</b> Max travel [m]	16	16	16	16	16	16
Number of stops	5	5	5	5	5	5
Accesses	1/2/3	1/2/3	1/2/3	1/2/3	1/2/3	1/2/3
<b>P</b> Platform depth [mm]	2500	2500	3000	2500	3000	3000
<b>L</b> Platform width [mm]	6000	5200	6100	4500	6000	6000
<b>F</b> Pit [mm]	250	250	300	300	1150	1150
<b>T</b> Min headroom [mm]	2400	2400	2400	2400	2200	2200
<b>J</b> Brackets distance [mm]	1000	1000	1000	1000	1000	1000
<b>S</b> Guide gauge [mm]	2100	2100	2900	2900	2500	2500
Fx Each cylinder load [KN]	38	38	40	48	25	30
Minimum speed [m/s]	0.10	0.10	0.10	0.10	0.10	0.10
Max speed [m/s]	0.15	0.15	0.15	0.15	0.15	0.15
Floor operation	Automatic	Automatic	Automatic	Automatic	Automatic	Automatic
On-board operation	Operator on board	Operator on board	Operator on board	Operator on board	Operator on board	Not available
Power supply	Three-phase	Three-phase	Three-phase	Three-phase	Three-phase	Three-phase
Switchboard	Pre-wired	Pre-wired	Pre-wired	Pre-wired	Pre-wired	Pre-wired
Clamping levelling device (standard)	4	4	4	4	4	4
Additional mechanical hooks (total)	4	4	4	4	4	4
Anchoring walls	1	1	1	1	2	1
Cylinder	2	2	2	2	4	4
Basic motor [kW]	5.5	5.5	5.5	5.5	5.5	5.5
Hydraulic oil	Supplied ISO32	Supplied ISO32	Supplied ISO32	Supplied ISO32	Supplied ISO32	Supplied ISO32
Pipe length [mm]	3000	3000	3000	3000	3000	3000
Maximum working pressure [bar]	160	170	160	170	140	160

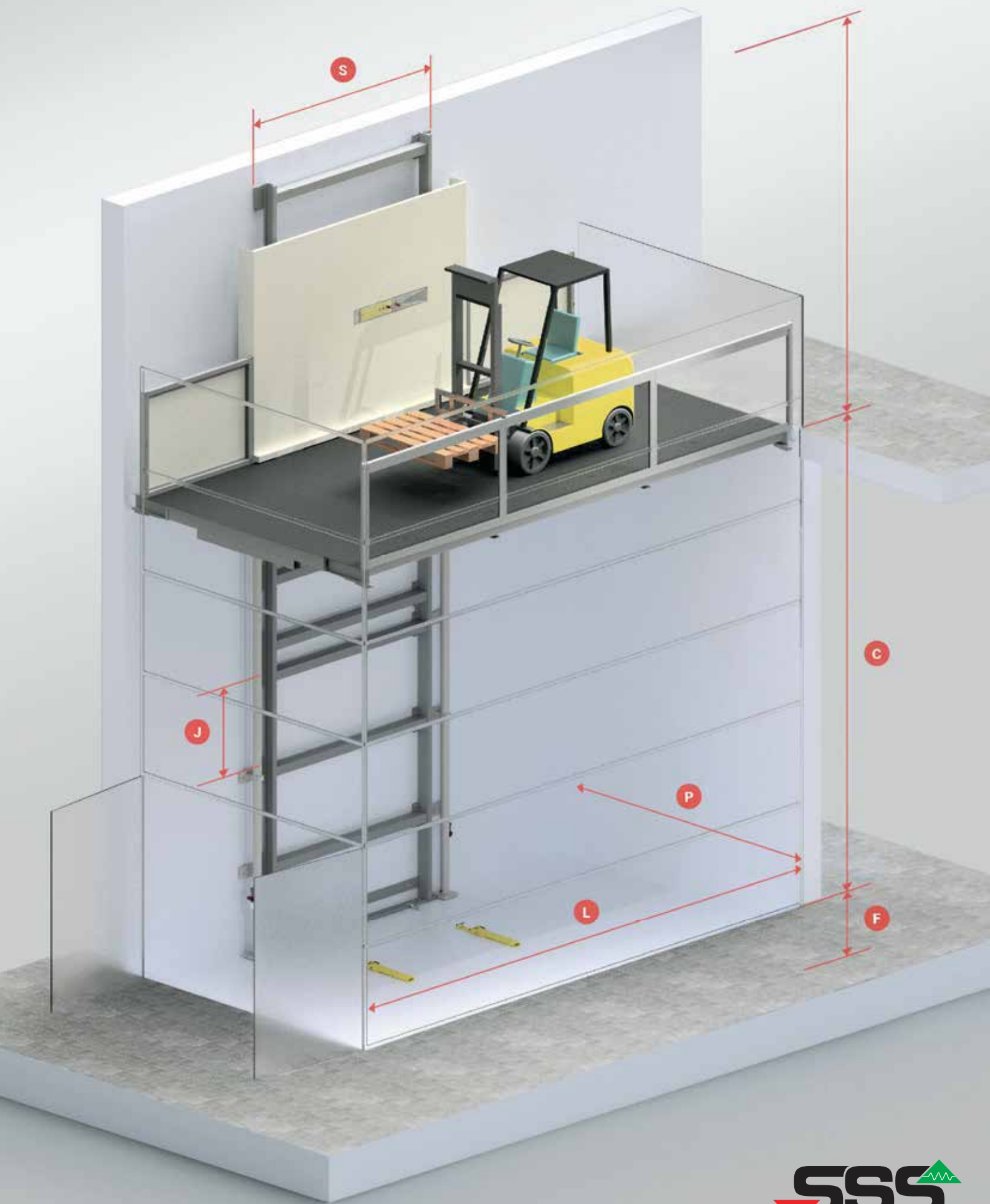
Technical drawings

p. 36-37

p. 38-39

p. 40-41





# UPRT

Single-column hydraulic system with retractable roof and cabin for indoor or outdoor installations.





**UPRT**  
for goods only

**What is it?**

A goods-lift with retractable roof and cabin designed for the transportation of goods.

**What is it doing?**

The upper surface of the roof becomes a walkable and drivable upper-level floor.

**Why do you need it?**

The operation must be carried out exclusively from the upper level with a dead man control.

**UPRT SPB**  
with operator on board

**What is it?**

A goods-lift with a cabin and retractable roof, certified to be used by operator on board.

**What is it doing?**

The retractable solution is certified for operation with an attendant on board, with perimetral protections to be provided at the upper floor.

**Why do you need it?**

It operates hold to run from on-board and call and send between levels.

**UP3RT**

300 Kg

**UP5RT**

500 Kg

**UP10RT**

1000 Kg

**UP15RT**

1500 Kg

**UP20RT**

2000 Kg

## UPRT | Models and main technical features

	UP3RT	UP5RT	UP10RT	UP15RT	UP20RT
Max capacity [Kgs]	300	500	1000	1500	2000
<b>C</b> Max travel [m]	7	16	16	16	16
Number of stops	5	5	5	5	5
Accesses	1/2/3	1/2/3	1/2/3	1/2/3	1/2/3
<b>P</b> Platform depth [mm]	1300	2000/2500	1700/1900	2000/2400	1800/2000
<b>L</b> Platform width [mm]	1700	2800/2500	2500/1900	2800/2400	2500/2000
<b>F</b> Pit [mm]	975	1400	1400	1400	1400
<b>T</b> Min headroom [mm]	2500	2500	2500	2500	2500
<b>J</b> Brackets distance [mm]	600	1000	1000	1000	1000
<b>S</b> Guide gauge [mm]	660	1000	1000	1000	1000
Fx Each cylinder load [KN]	18	30	35	40	45
Minimum speed [m/s]	0.10	0.10	0.10	0.10	0.10
Max speed [m/s]	0.15	0.15	0.15	0.15	0.15
Floor operation	Automatic	Automatic	Automatic	Automatic	Automatic
On-board operation	Operator on board	Operator on board	Operator on board	Operator on board	Operator on board
Power supply	Three-phase	Three-phase	Three-phase	Three-phase	Three-phase
Switchboard	Pre-wired	Pre-wired	Pre-wired	Pre-wired	Pre-wired
Clamping levelling device (standard)	1	2	2	2	2
Additional mechanical hooks (total)	/	/	/	/	/
Anchoring walls	1	1	1	1	1
Cylinder	1	1	1	1	1
Basic motor [kW]	2.2	3	4	4	5.5
Hydraulic oil	Supplied ISO32	Supplied ISO32	Supplied ISO32	Supplied ISO32	Supplied ISO32
Pipe length [mm]	3000	3000	3000	3000	3000
Maximum working pressure [bar]	120	140	180	195	165

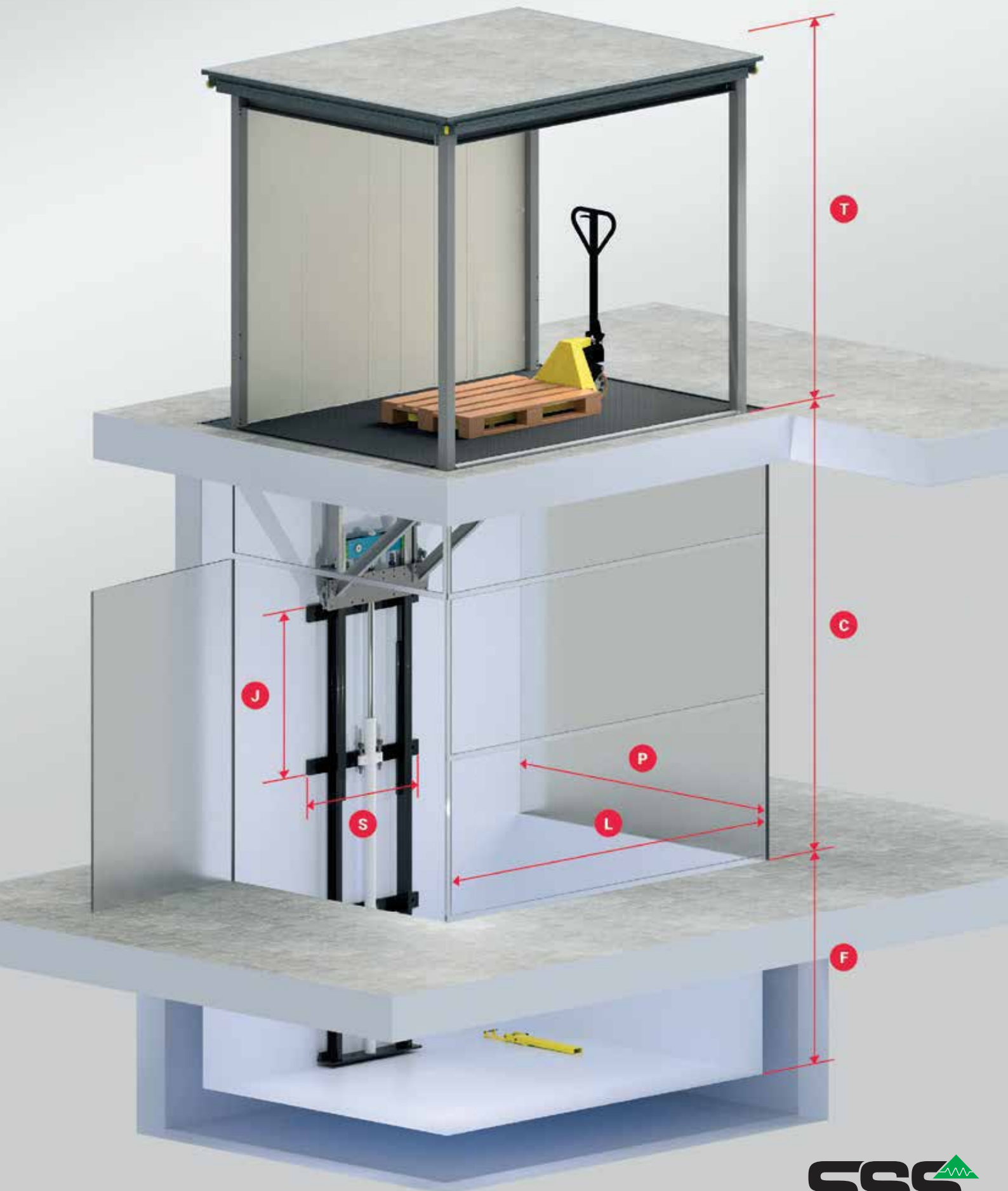
Technical drawings

p. 42

p. 43

p. 44





## Operator on-board

All our goods-lifts are certified for the operator on board control.  
This option has a specific outfitting which includes:

### PROTECTION PANEL

1

The protection of the operator from moving parts is guaranteed by a 1800mm high panel made in painted metal sheet.



### PUSHBUTTON PANEL COMAND

2

Pushbutton panel with dual control held simultaneously (hold to run) to ensure the operator safety.  
Emergency dialer system landline or GSM.  
Command of automatic descent to the lower floor in case of power failure.





### 3 PERIMETRAL PHOTOCELLS

The perimeter of the platform is controlled by double ray photocells to ensure the on board correct position of the goods and the operator safety.



### 4 CHAIN LOOSENING SENSOR

The safety coefficient of the chains is above 8. Moreover, a sensor controls the slackening of each single chain.

# Outfittings

## 1 STANDARD

The standard system includes the lifting platform which can be equipped with different accessories.

## 2 ON BOARD PARAPETS

Available 1100 mm (standard height) or 1800 mm (maximum height).

Parapets are made of blind metal sheet cladding painted RAL 9006 and are installed on board on 1 to 3 sides of the platform.



## 3 SOLID CABINS FOR INDUSTRIAL USE

Available with an height of 2100 mm they are made of blind metal sheet cladding (paint RAL 9006). Equipped with photocell barrier on the access sides and a led strip lighting system.





# Surfaces

Are available different surface treatments suitable for any application. Hot dip galvanisation for system exposed to bad weather conditions or where are required higher protection from aggressive agents.

Elements such as sliding guides and cylinders can be treated with special paints such as antiacid zinc primer or marine cycle paint for greater resistance to saline atmosphere.

For food industries all surfaces can be made of Stainless Steel AISI class 304 or 316.

1

## STANDARD PAINTING

Epoxy powder paint available in standard colours RAL7016, RAL9006 metallic.

2

## OUTDOORS INSTALLATION

Painting customised or special RAL for corrosive environments with anti-acid zinc or marine primer.

3

## STAINLESS STEEL

Appropriate for food processing industries, Stainless Steel is available on class 304 or 316 with the possibility of smooth or embossed metal sheet.



# Metal Structure

1

CUSTOM

In the absence of a supporting wall we provide a metal structure for each type of plant. Anchored in the pit and on the landing planes, buffered in blind sheet metal or sandwich panels with internal and continuous smooth wire.

2

EASY-CASE

The Easy-Case structure is completely self-supporting and designed for UP3 systems and UP6. Easy-Case does not need anchoring to landing plans and is the suitable solution for the industrial mezzanines.



# Landing doors

Based on their application it is possible to supply different kinds of landing doors (manual or automatic) always in compliance with safety regulations and the customer's needs.

1

## EASY DOORS

Original Updynamic doors made of heavy metal structure in compliance with EN1090 standard supplied with safety doors for heavy duty use.



2

## FIRE DOORS

When required, we can supply fire rated doors EI60 and EI120 with safety locks.



3

## ROLLER DOORS

Max dimensions 6000x5000 mm.  
Controlled by an interface card for the disconnection of the motor power supply and a safety magnetic contact with RFID technology.  
Available versions: roller shutter, sectional door. Standard colour: RAL 9006.









We manufacture and export  
our systems in more than  
30 countries worldwide.

**UP** DINAMIC

**SSS**  
Elevators & Escalators

# U-cloud



1

## FROM GOODS-LIFT TO THE CLOUD

All the information and data of your goods-lift at your disposal on your U-Cloud.



2

## PREDICTIVE MAINTENANCE

Check your goods-lift indicators in real time for predictive maintenance.



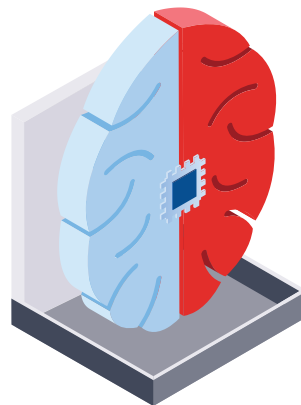




3

### INTEGRATED REMOTE MONITORING

Integrated remote monitoring allows you to manage all your goods-lift installation in one portal.



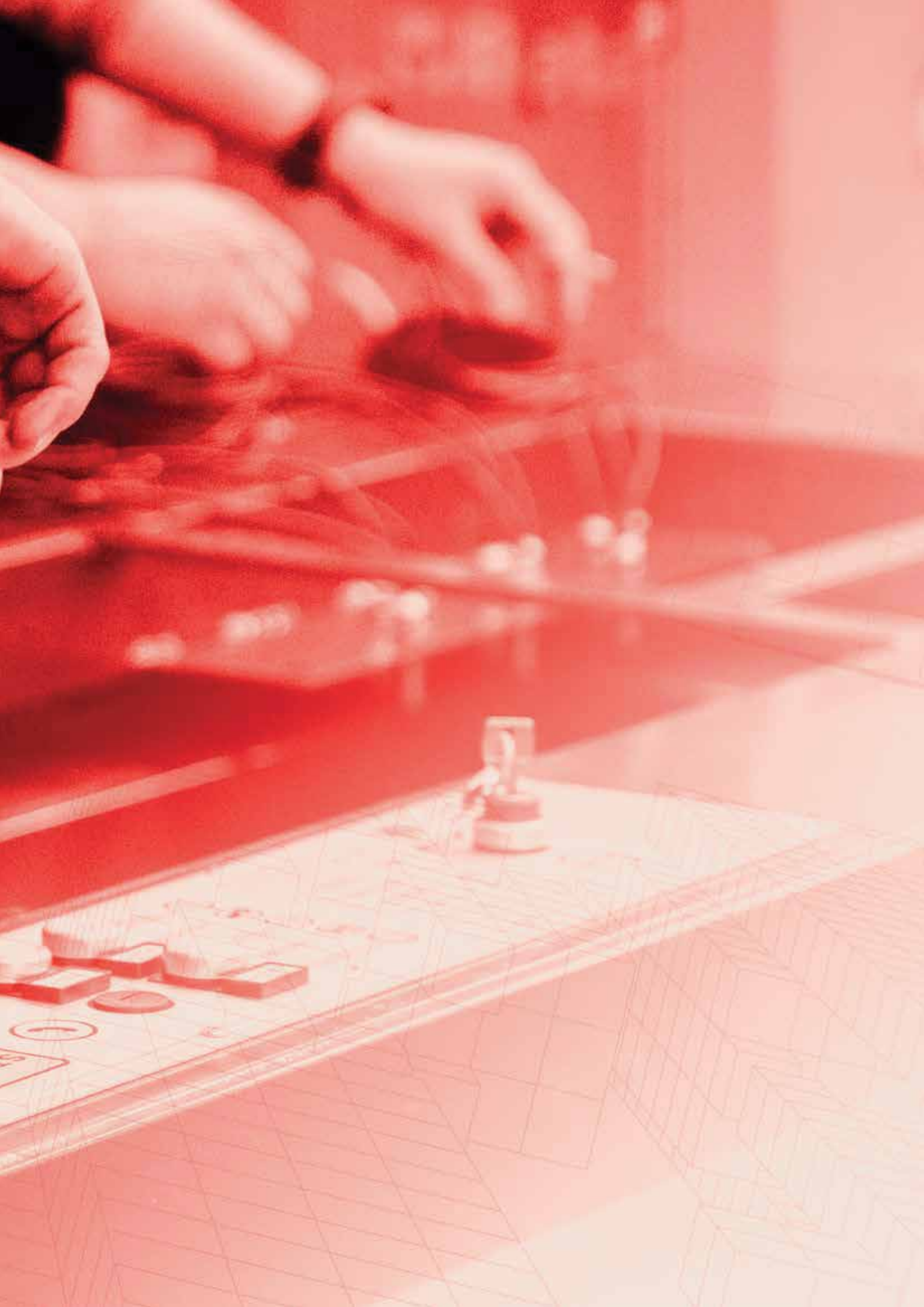
4

### IOT-SMART INDUSTRY

Interconnect your good-lifts with other Industry 4.0 automation









Loc 1: Antelias, Seaside, SSS Bldg,  
Beside AISHTI, fifth floor .

Loc 2: Bchamoun, Behind Louise Wegmann School,  
Andalos St. - SSS Bldg.

Tel: +961 71 260 007

Email: [sales@sss-lb.com](mailto:sales@sss-lb.com)

[www.sss-lb.com](http://www.sss-lb.com)