



Introducing Our

FREIGHT & CAR LIFT

Loc 1: Antelias, Seaside, SSS Bldg,
fifth floor beside AISHTI.

Loc 2: Bchamoun, Behind Louise Wegmann School,
Andalos St. - SSS Bldg.

Tel: +961 71 260 007 | +961 25 803965

Email: sales@sss-lb.com

www.sss-lb.com





FREIGHT LIFT

The appearance of Freight lift has brought great convenience for the transporting, and the Freight lift with a huge capacity could embody its advantage of transporting better. UN-F5000 Freight lift, with a capacity of 1T~5T, could achieve effective energy saving when the huge capacity is matched with a energy saving control system.

The main configuration

Capacity	630-5000 Kg
Speed	0.25~1.0m/s
Machine	Geared machine
Controller	U-Con
Door operator	Permanent magnetic VVVF door operator
Operation Panel	U-CF500
Door protection	Light curtain



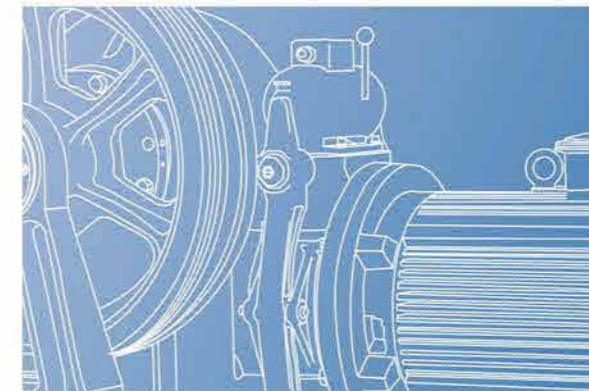
CAR LIFT

With economic development, people's living standard and the quality of life are unceasingly improving, and the automobile are gradually entering into life of common people. The UN-F5000-Q car lift developed by UNITE using the Car lift manufacturing technology fully, is the Car lift developed for the need of domestic and foreign market by using the highly mature Variable Voltage Variable Frequency (VVVF) control technology for precise speed control, which has avoided the noise and the car vibration produced by the overload of traction system owing to the unevenly stress to the car, so as to optimize its unique product characteristics to the maximum and gives a more safe and reliable guarantee for your loved car. The UN-F5000-Q car lift has become an ideal choice for factory, warehousing, department store, property center and other organizations.

The main configuration

Capacity	3000kg~5000Kg
Speed	Geared machine
Controller	U-Con
Door operator	Permanent magnetic VVVF door operator
Operation Panel	U-CF500
Door protection	Light curtain

POWERFUL MOTOR



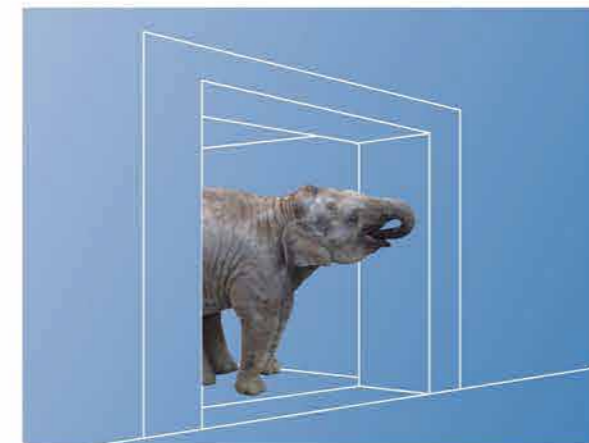
Stable and reliable performance

The optimized motor of freight elevators, improve the stability of motor, reduce noise pollution, satisfy customers' need of durability.



Simple Construction Maintenance Friendly

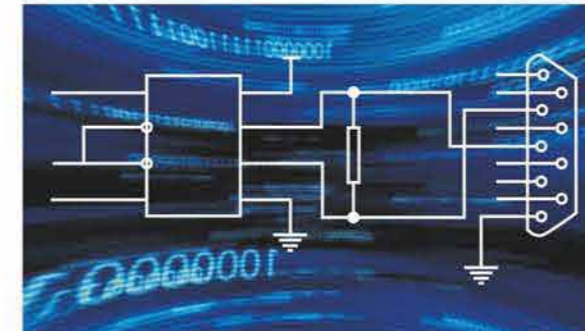
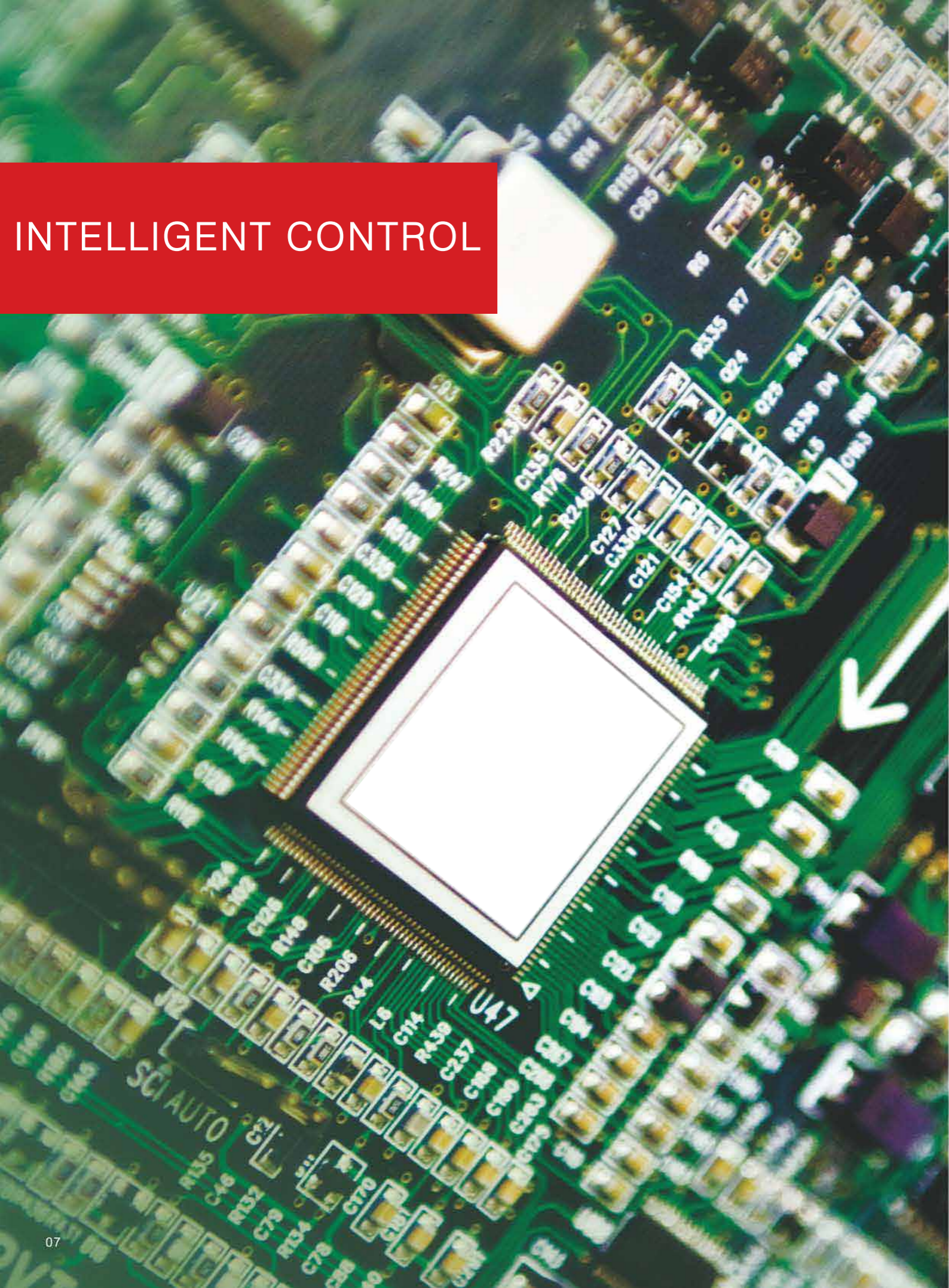
Adopt the mature technology of asynchronous motor, the mechanical structure is stable and reliable, maintained friendly and quickly, the use-cost is reduced.



Strongly capacity creat value

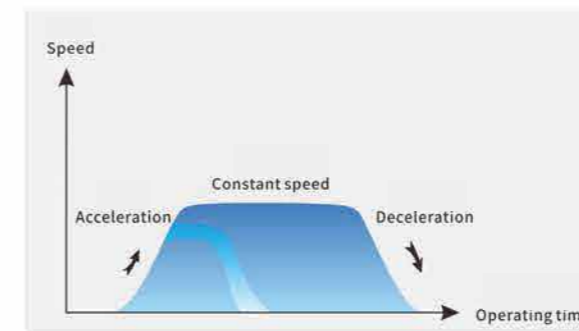
The freight elevators' dedicated motor have different grades of Load specifications, it is convenient for the customer to choose. The largest load capacity is 5000 kg. it is efficient to transport and bring considerable revenue.

INTELLIGENT CONTROL



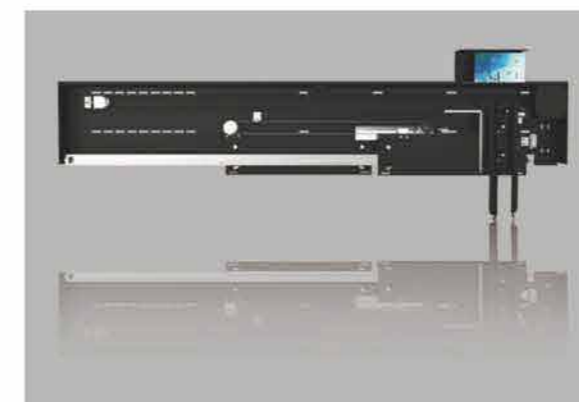
Serial Type Communication System

Adopt the pulse signal, landing display and call only need 4 wires, it will reduce the cost of connection failure and production cost greatly, improve the system reliability, also it will be convenient to upgrade in the future.



The Unique Pattern Generator

Make the elevator become more stable in the process of accelerate, decelerate and braking, reduce the running vibration, improve the leveling accuracy, reduce the time of running.



Adopt the skilled technology of Variable frequency drive and control logic, the synchronous door knives device to ensure that open and close car doors synchronous operation, and run sensitively and safely. The physical design is concise and reasonable, the space is saved, it is easy to install and repair.

SAFETY FUNCTION



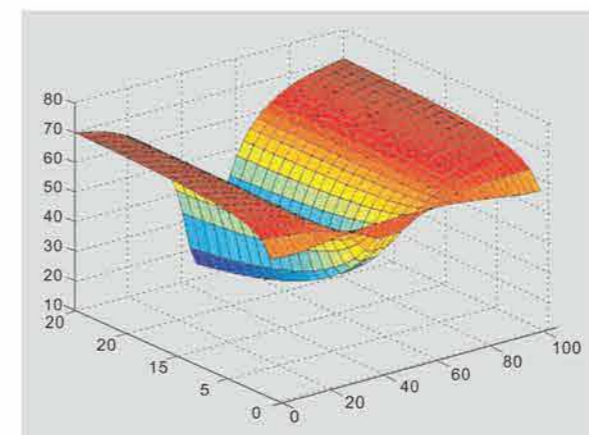
Safe Reliable, Worth Trusting

The door system uses Infrared curtain door protection technology the beams reached 154, can protect the goods effectively the security during opening, has increased a reliable safeguard to the UNITE quality. The high strength car structure, key component's optimization design has promoted overall construction reliability and security, which effectively guarantees motor transport's security.



Micro Control, High Efficiency Running

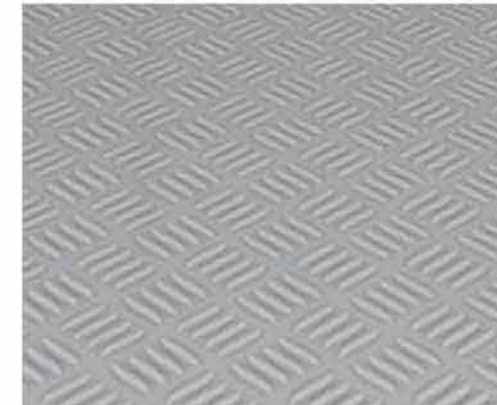
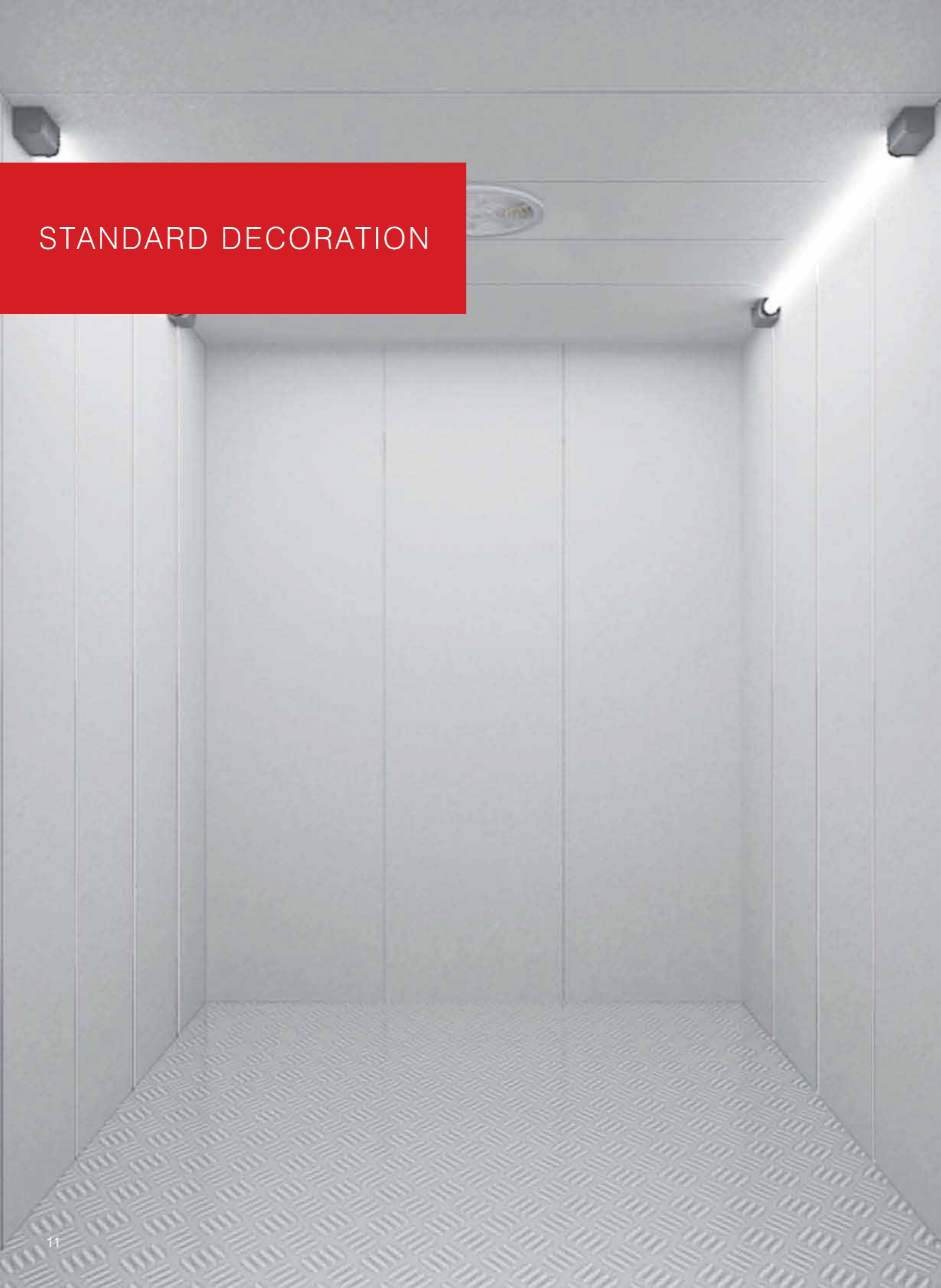
Used the microcomputer modular control system, the five computer module in data network system. Can be under the premise of without changing the hardware configuration field to modify the software, adjust the system parameters, improve the ability of the elevator control system upgrade, accurate and efficient control of the elevator all drive and function.



Stable Performance, Leveling Accurately

Dedicated graphics generator make run speed curve gently smooth, avoid impact in the process of deceleration and acceleration, ensure the safety of passengers and cargo stability, high efficiency, leveling accurate, goods transportation is convenient, safe.

STANDARD DECORATION



U-Q0501

Ceiling : Painting steel(Gray)
 Car panel: Painting steel(Gray)
 Floor: pattern steel

Car wall



Volcano gray



Ivory yellow

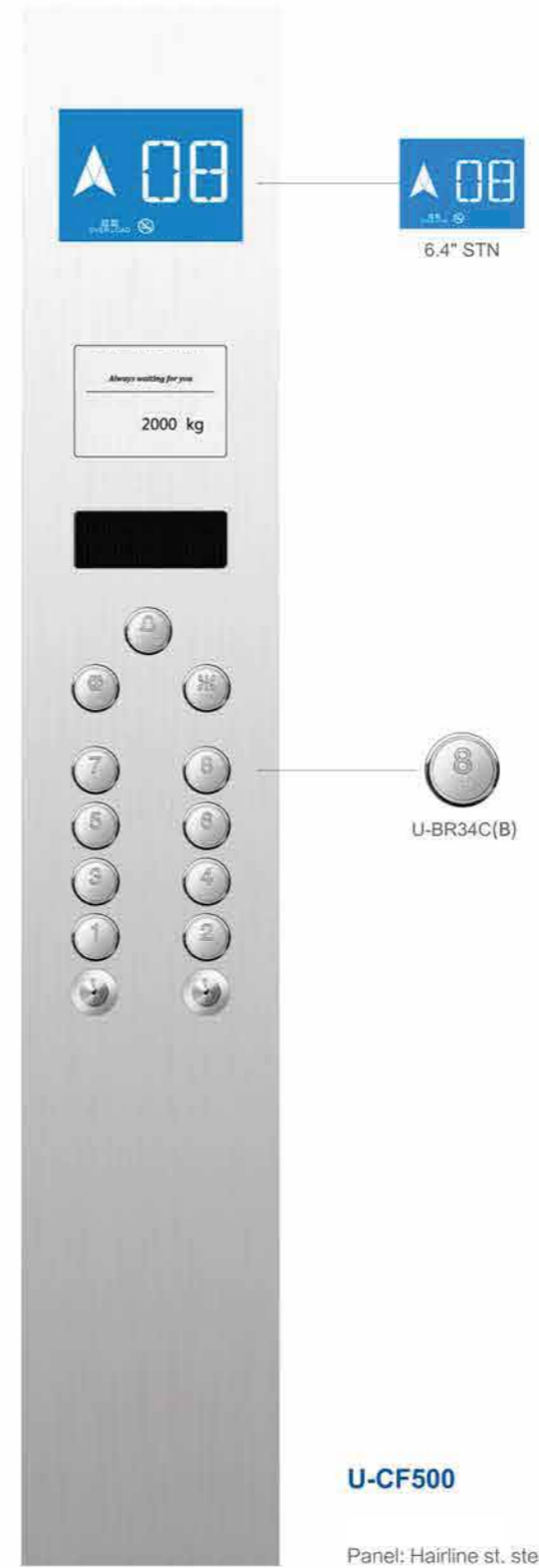


Apple green

STANDARD CONFIGURATION



COP



HOP



* Above nameplate is for reference only, the specific in kind prevail.

OPTIONAL CONFIGURATION



* Above nameplate is for reference only, the specific in kind prevail.

FUNCTION LIST

Basic function

Full collective operation

Main landing

Infrared curtain door protection

Top of car inspection

Terminal floor protection

Over-load protection

Door open button / door close button

Independent time control of landing door and car door

Hall / car direction indication

Hall / car position indicator

4 Sides inter communication device(5 sides when over 30m)

Car emergency light

Car alarm bell

Full-load non stop run

Delayed car door close protection

Correcting run

Drive motor overheat protection

Calls in opposite direction auto-clear

Parking switch

Pre-torque output

Fault self-diagnosis

Shaft position self-learning

Brake feedback inspection

Contact feedback inspection

Velocity feedback inspection

Cancel error calls

Door hold cancel

Auto Parking

Function options

Photocell + safety edge door protection

Emergency fireman operation (EFO)

Emergency fireman's service (EFS)*

Fireman's service light

Independent services

Non stop button

Door hold button

Duplex control/ group control

Area monitor system (AES)*

Auto rescue device

Elevator air conditioner*

Attendant service operation

Timing setting*

Earthquake operation*

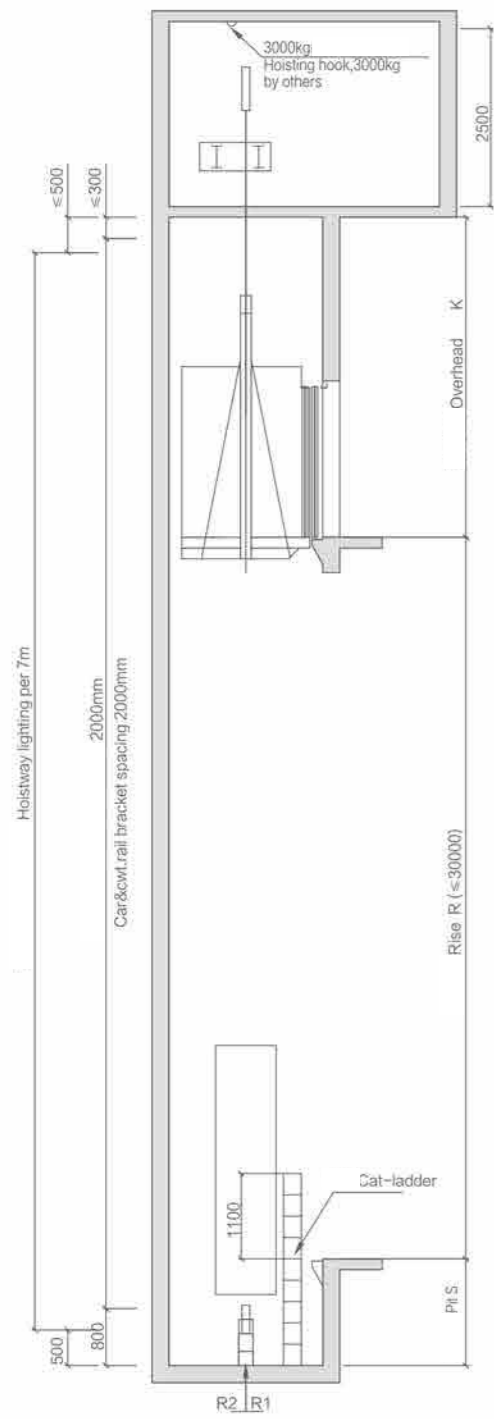
Fn and light protection-FLP

Emergency rescue operation(ERO)

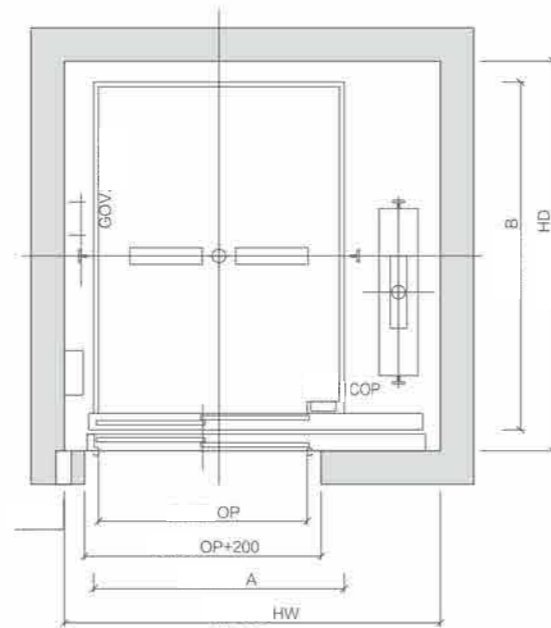
Car chime

Notice: 1. Above functions are only applicable for freight lift with speed: 0.25 - 1.0m/s.
2. The option with "*" need to confirm with the factory first.

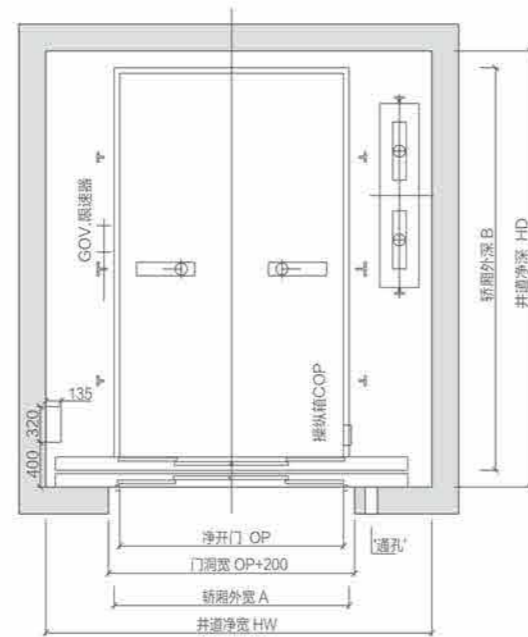
UN-F5000 LAYOUT OF FREIGHT LIFT



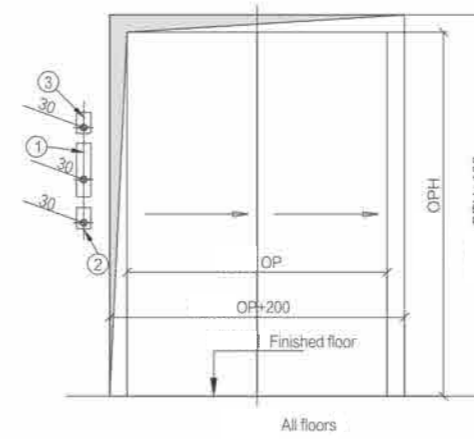
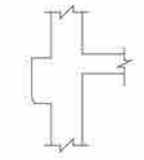
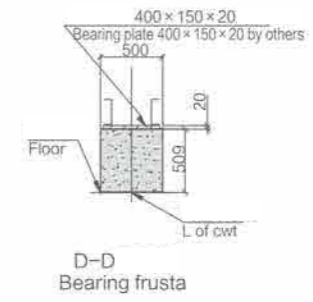
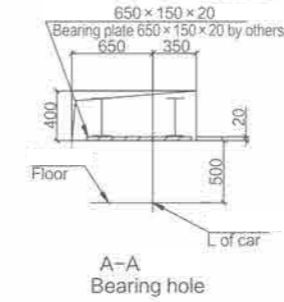
Section Drawing



(630-2000kg)
layout drawing

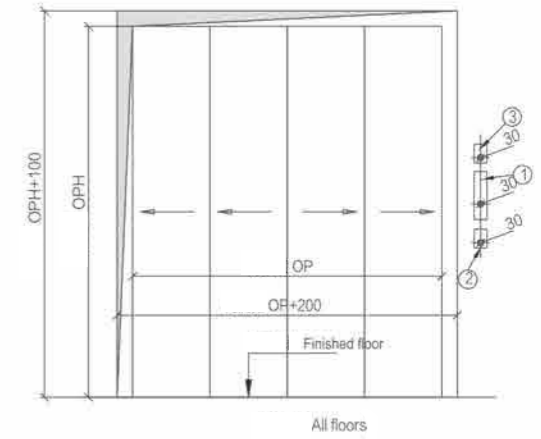


井道平面图 (3000-5000kg)
layout drawing



1. Button and display
 2. LOP only for base floor
 3. Fire switch (if have EFS), only for base floor
- Suggest to use 30mm PVC tube for wire reservation

Front view



1. Button and display
 2. LOP only for base floor
 3. Fire switch (if have EFS), only for base floor
- Suggest to use 30mm PVC tube for wire reservation

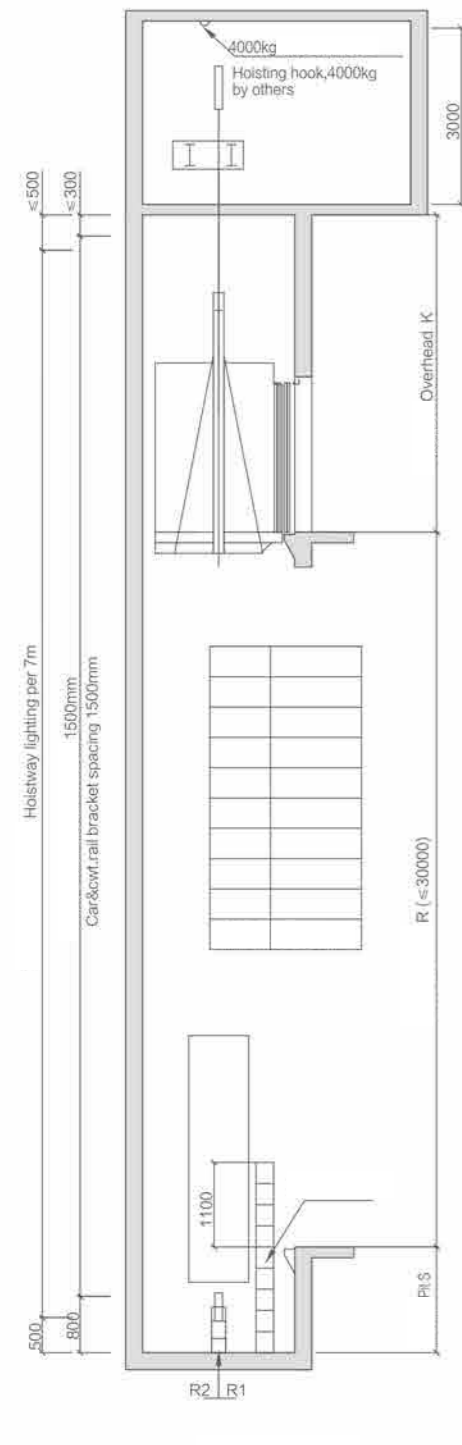
Front view

(kg) Capacity	(m/s) Speed	(mm) Cabin outer size (A) × (B)	(mm) Opening clear size (OP) × (OPH)	(mm) Shaft clear size (HW) × (HD)	Min. pit depth S (mm)	Min. overhead K (mm)
630	0.5	1300 × 1500	1100 × 2100	2150 × 1800	1500	4500
	0.63					
	1					
1000	0.5	1500 × 1800	1100 × 2100	2350 × 2100	1500	4500
	0.63					
	1					
2000	0.5	1800 × 2500	1500 × 2100	2700 × 2800	1500	4500
	0.63					
	1					
3000	0.5	2100 × 2800	2000 × 2100	3450 × 3100	1500	4650
	1					
4000	0.25	2100 × 3600	2000 × 2400	3450 × 3900	1500	4650
	0.5					
5000	0.25	2500 × 3600	2400 × 2400	3950 × 3900	1500	4650
	0.5					

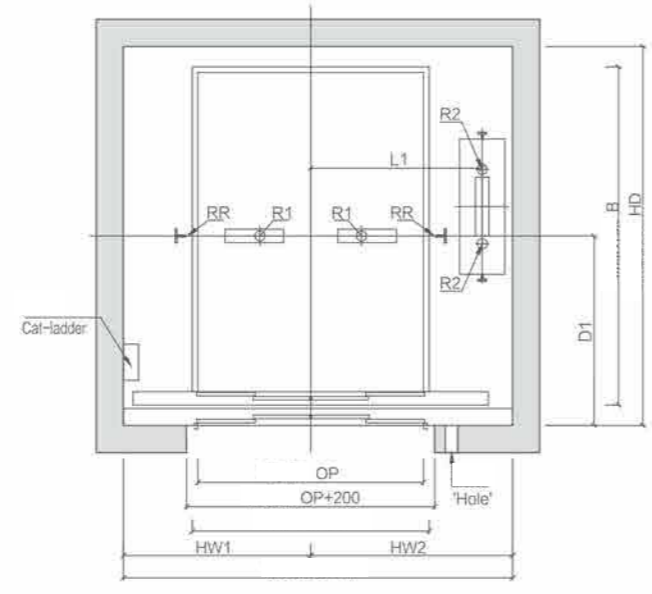
Note: The above drawing is for reference sample

UN-F5000-Q LAYOUT OF FREIGHT LIFT

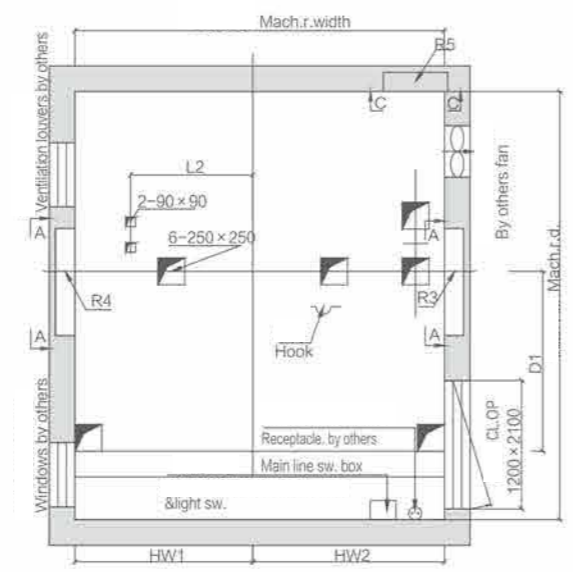
3000kg
Loading capacity: 3000kg



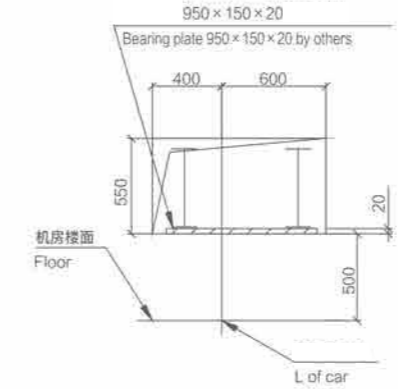
Section Drawing



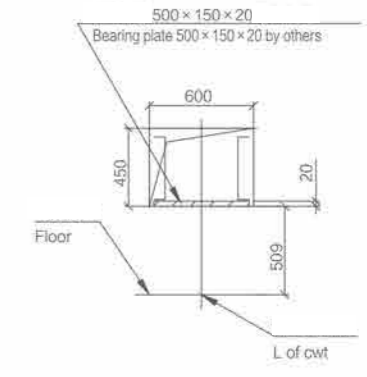
layout drawing (single opening)



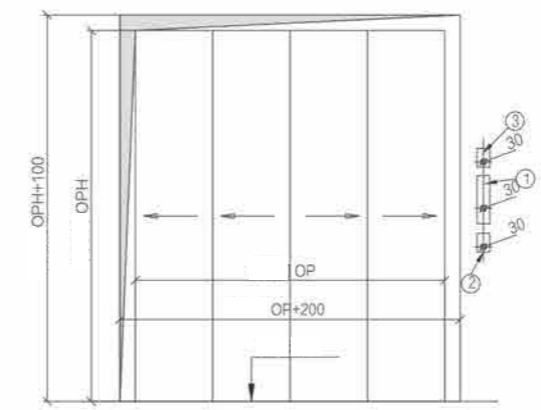
Cutouts of machine room



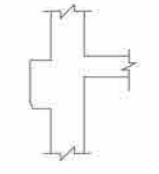
A-A Bearing hole



C-C Bearing hole



Front view



Nosing detail

- 1. Button and displ
 - 2. LOP only for base floor
 - 3. Fire switch (if have EFS), only for base floor
- Suggest to use 30mm PVC tube for wire reservation

(kg) Capacity	(m/s) Speed	(mm) Cabin outer size (A) × (B)	Opening clear size (OP) × (OPH)	(mm) Shaft clear size (HW) × (HD)	Min. pit depth S (mm)	Min. overhead K (mm)
3000	0.25	2600 × 6000	2400 × 2400	4000 × 6360	1500	4800
	0.5					
5000	0.25	3500 × 6000	2600 × 2400	4560 × 6360	1500	4800
	0.5					

Note: The above drawing is for reference sample