

BS- 660/A

Rate-of-rise heat detector

CE
19
1293

TECHNICAL CHARACTERISTICS

OPERATION VOLTAGE	17-30V DC
START UP POWER CONSUMPTION	1mA for 2 sec
STANDBY CONSUMPTION	90µA
ALARM CONSUMPTION	12mA (with activated onboard LED)
TEMPERATURE SENSITIVITY	57°C
INDICATORS	Alarm LED
CLASS	A1R
OUTPUT	To panel / to external LED driver (BS-572)
DEGREES OF COVER PROTECTION	IP42
PRODUCED IN ACCORDANCE WITH	EN 54-5
OPERATING TEMPERATURE RANGE	-40 to 70 °C
RELATIVE HUMIDITY	Up to 95%
CONSTRUCTION MATERIALS	ABS/PC
EXTERNAL DIMENSIONS	103 (d) x 48 (h) mm
TYPICAL WEIGHT	143 gr.
GUARANTEE	2 years

**Thank you for your trust in our products
Olympia Electronics - European manufacturer**

GENERAL

The user have to read carefully the following instructions, in order to be properly informed and keep them for future use.

The BS-660/A is a conventional heat detector which integrates the function of rate-of-rise heat detection. The detector transitions to alarm state when the temperature reaches 57°C. Also, the detector transitions to alarm state when the temperature rises suddenly by 32°C regardless of the initial temperature at the beginning of the sudden rise event.

They are composed by two parts. A plastic base which is placed on the ceiling and the main body of the detector which fits on the plastic base with a simple rotation to the right. The detectors have a 360° visible led and a remote led driver which are light up constantly in case of detection of fire, till cancelled from the panel. They are turned off only when a reset command is given from the panel. The indicator led blinks every 6 sec indicating the normal function.

INSTALLATION

The detectors should be placed in the ceiling in visible points without side obstacles, away from places that are barely ventilated or with strong air currents and water vapor. Each detector covers an area of 50 m² while the distance between two detectors should not be more than 15m. Also, they must be placed at least 50 cm away from fluorescent lamps. Cable diameter should be from **0.5 to 2.5mm**.

MAINTENANCE & FUNCTIONAL TESTING

The detector has fault diagnosis function, which automatically informs you through the onboard LED when detector replacement is required. The indication LED blinks every 7 seconds. In normal operation it blinks 1 time and if there is a failure it blinks 3 times. These

functions combined with periodic manual testing ensure maximum security level. It is suggested to carry out a test every 6 months or after a change in the position of the sensor. A key element of its proper function is the air to be able to freely circulate inside it. So be careful not to block the openings of the outer cover. Before the manual testing procedure it is suggested to enable the special "walk in test" mode from the panel.

CAUTION !!

After installation the device must not be covered with dust or be painted or anything else happen that will block the air to get to the sensor. Special attention must be given during the installation and the use of the device, since the user assumes full responsibility for proper operation afterwards.

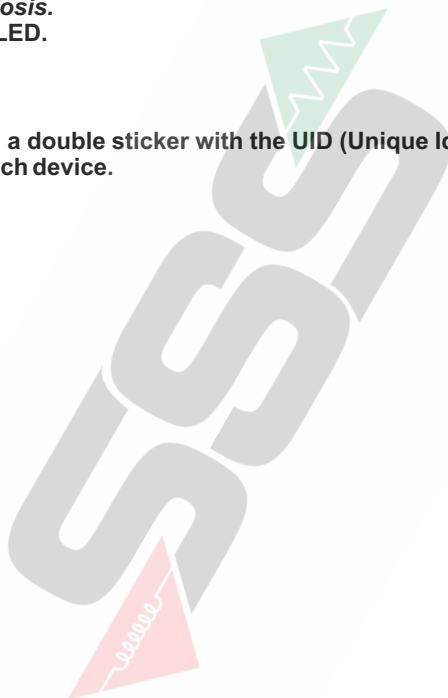
Also, during site works place the plastic cover to the detector as shown in the picture below to protect the device from dust.

Additional features of the device :

- *Integration of dynamic algorithms for noise and false alarm rejection.*
- *Automatic fault diagnosis.*
- *360° optically visible LED.*

UID:

In every device there is a double sticker with the UID (Unique Identifier) number. This number is unique for each device.



Installation process

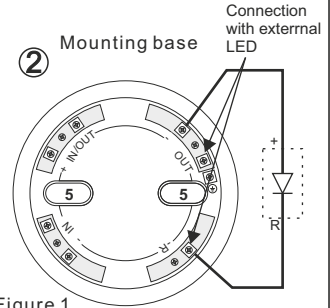
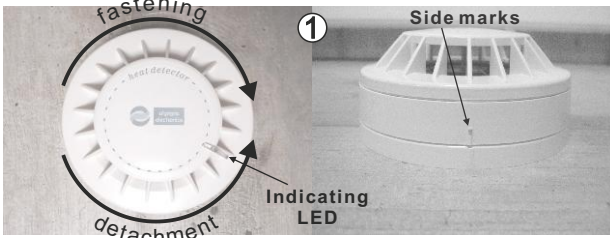


Figure 1

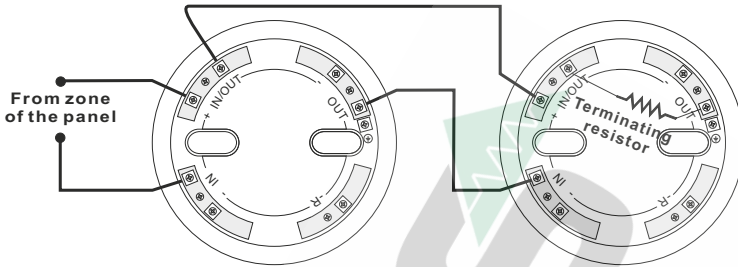


Figure 2

Connection

If the power of the detectors is turned off, wait for 3-5 seconds before you turn the power on again.

1. Remove the detector from its base rotating to the left till the side marks are aligned.
2. Fasten the base with the supplied mounting materials (point 5).
3. Connect the power cables (minding the correct polarity) according to the requirements of the installation (Figure 1, 2).
4. Place the detector carefully so that the side marks are on the same position and rotate the detector clockwise until it locks. Power the device and after 3-5 seconds it is ready for operation.

CONNECTION

1. **+ IN/OUT** : It is connected to the zone of the panel or to the **(+ IN/OUT)** contact of the previous detector.
2. **- IN** : It is connected to the **zone of the panel** or to the **(- OUT)** contact of the previous detector.
3. **- OUT** : It is connected to the next detector **(- IN)** or if it is the last one to the terminal resistor.
4. **- R** : It is connected with BS-572.
5. \oplus : Connected to the cable's shield (when shield is used).

BS-660/A

Rate-of-rise heat detector



1293

EN 54-5**19****DoP: 921660004_59_001****olympia™
electronics**

SAFETY & SECURITY SYSTEMS

*for a safer world***EGINIO
PIERIAS
60300
GREECE**

Warranty

Olympia Electronics guarantees the quality, condition and operation of the goods. The period of warranty is specified in the official catalogue of Olympia Electronics and also in the technical leaflet, which accompanies each product. This warranty ceases to exist if the buyer does not follow the technical instructions included in official documents given by Olympia Electronics or if the buyer modifies the goods provided or has any repairs or re-setting done by a third party, unless Olympia Electronics has fully agreed to them in writing. Products that have been damaged can be returned to the premises of our company for repair or replacement, as long as the warranty period is valid.

Olympia Electronics reserves the right to repair or to replace the returned goods and to or not charge the buyer depending on the reason of defection. Olympia Electronics reserves the right to charge or not the buyer the transportation cost.